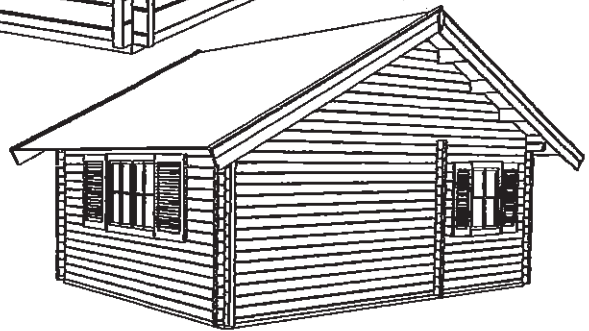


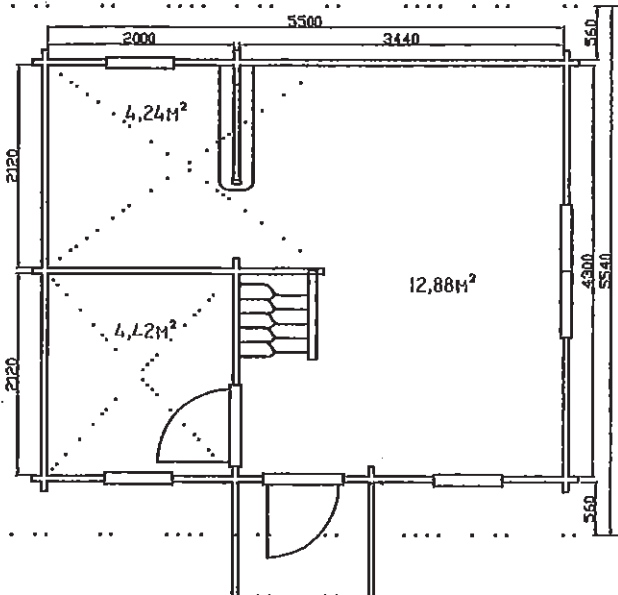
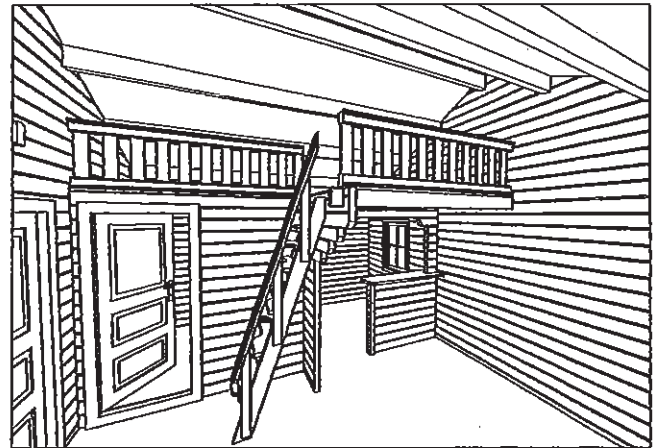
5543(44), 5543(60), 5543(70)



3.76

2.25

0.00



5.50×4.3m (60mm、70mm)

軒の出0.56m

外部ト71 /内部ト71

ダブル窓雨戸付き1

窓雨戸付き3

床板22mm /屋根板19mm

棟木・母屋60×180mm・60×140

土台140×60・70×60

1階面積23.36㎡ /外部面積11.5㎡