

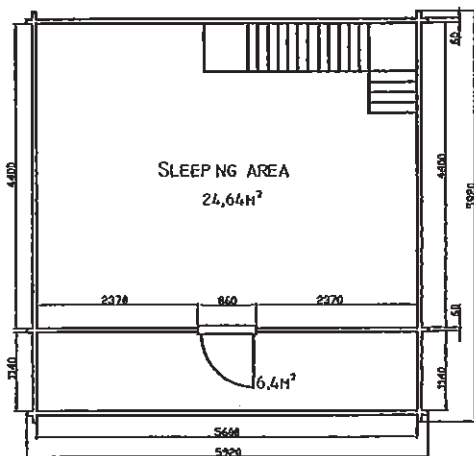
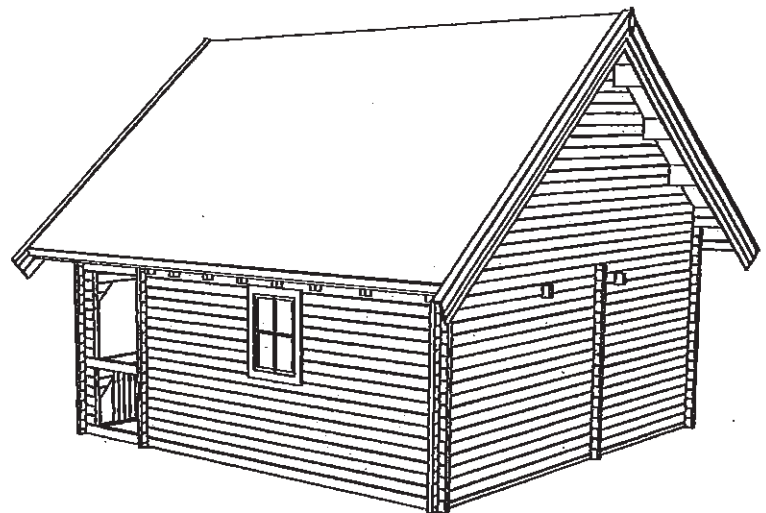
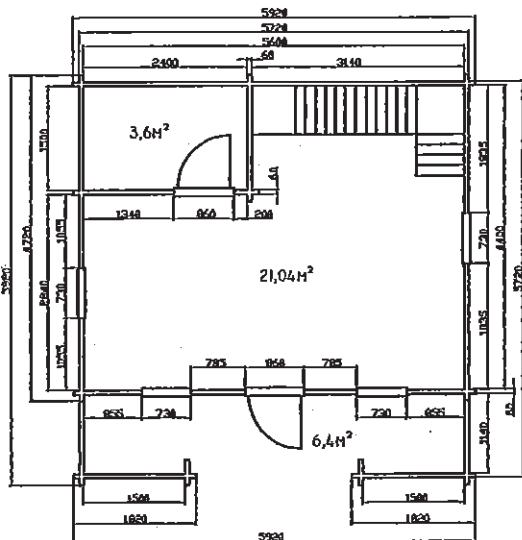
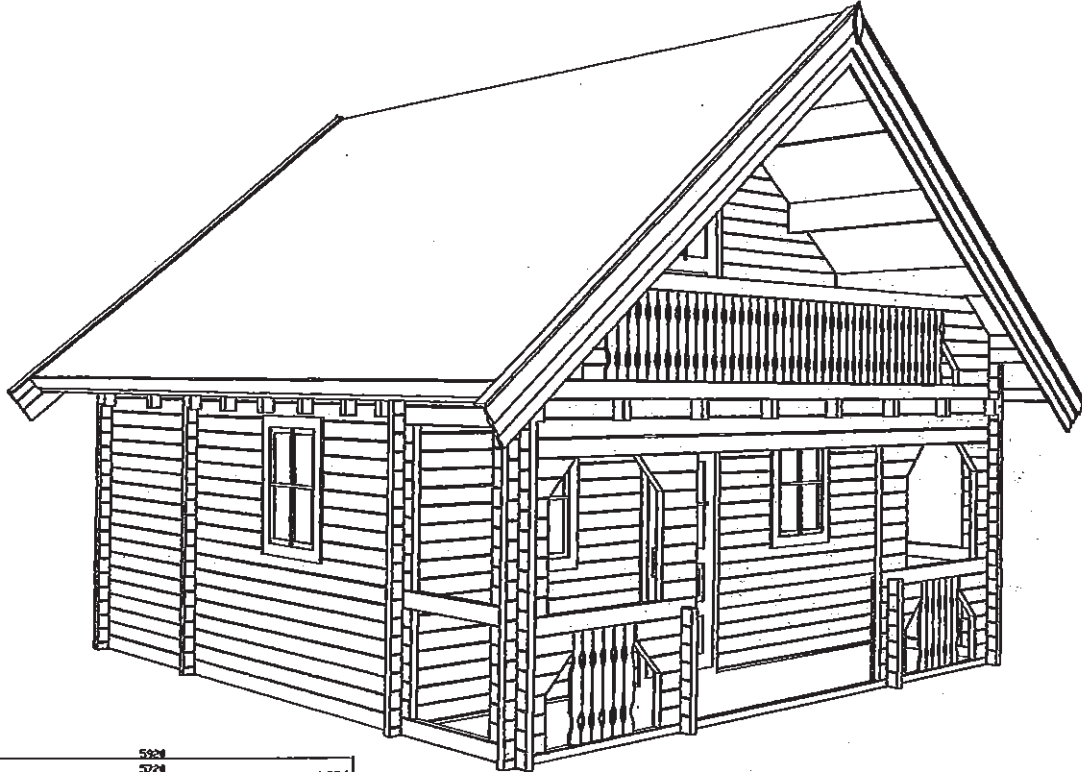
NGシリーズ

(株) ウッディ・ワールド



5644(60)

5644(70)



5.6×4.4m (60mm)
軒の出1.4m /ベランダ1.14m /屋根勾配36°

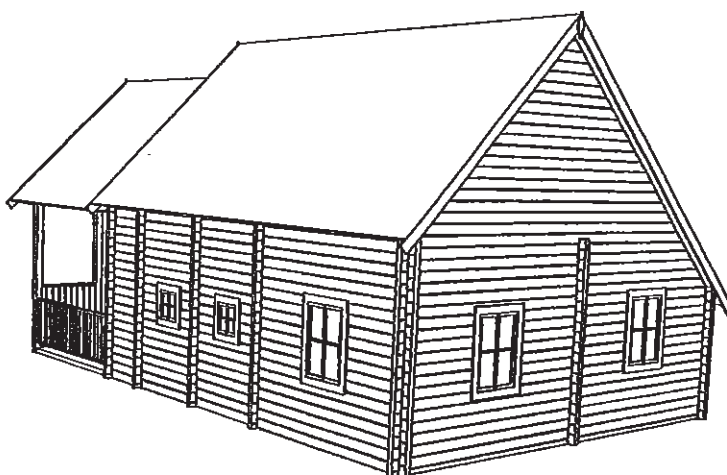
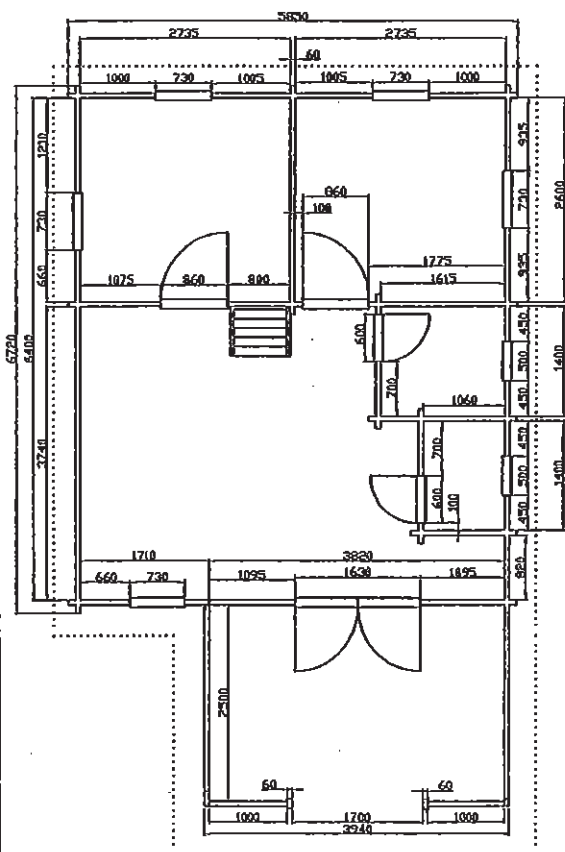
シングルドアガラス付き 2
内部ドアガラス付き 1 /シングル窓 4

床板22mm
屋根板・1階天井板19mm
棟木・母屋240×60
土台140×44

壁の高さ3m
屋根の高さ5.16m

5564(60)

5564(70)

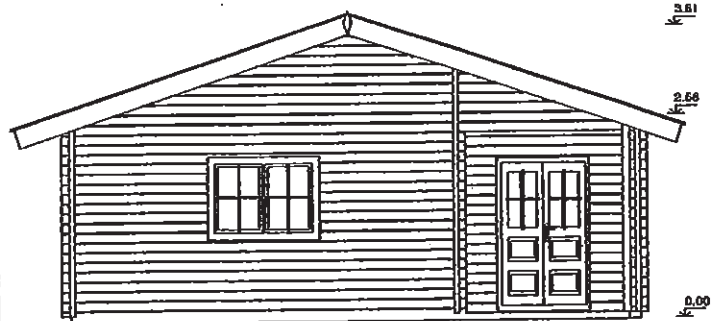
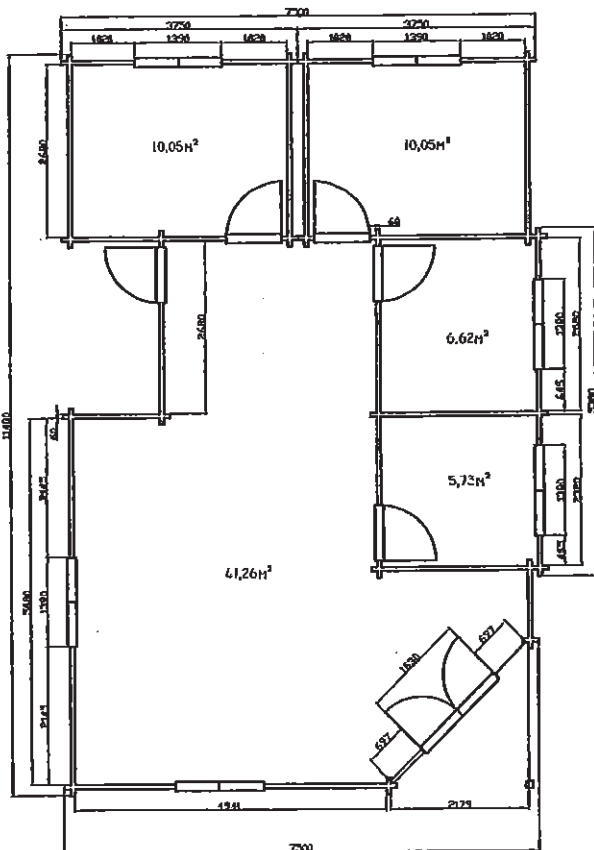
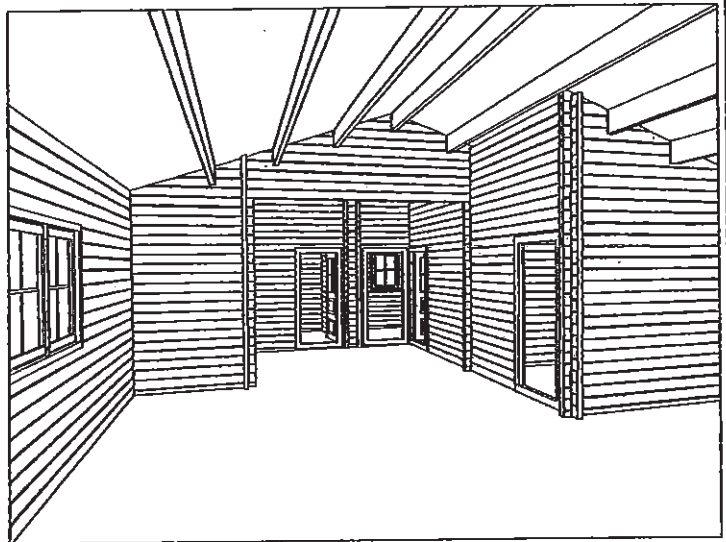
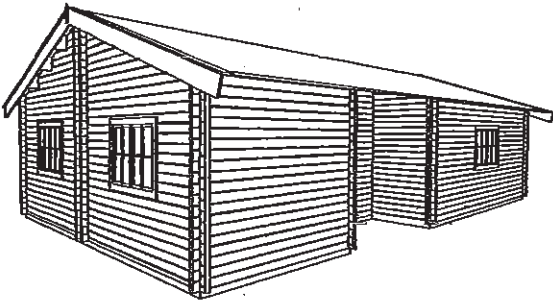
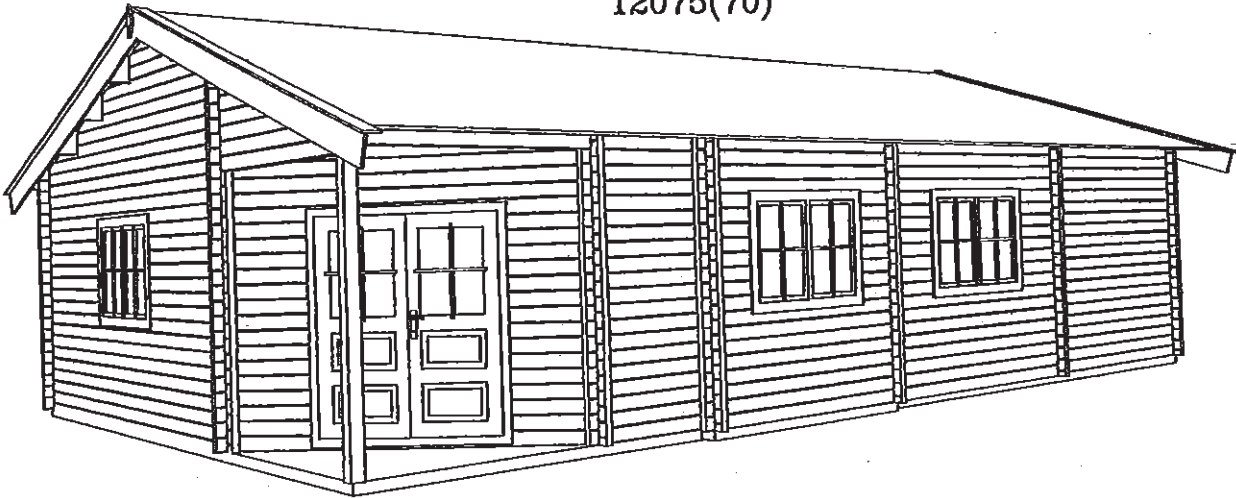


5.53×6.4m (60mm、70mm)
軒の出0.3m /ベランダ2.5m /屋根勾配45°

1階面積35㎡
2階面積14.4㎡
ベランダ9.6㎡

ダブルアガラス付き1 屋根板・1階天井板19mm
内部アガラス付き4 棟木・母屋250×60mm
窓5、小窓2 土台140×50、70×50mm
床板22mm /デッキ板32mm

12075(60)
12075(70)

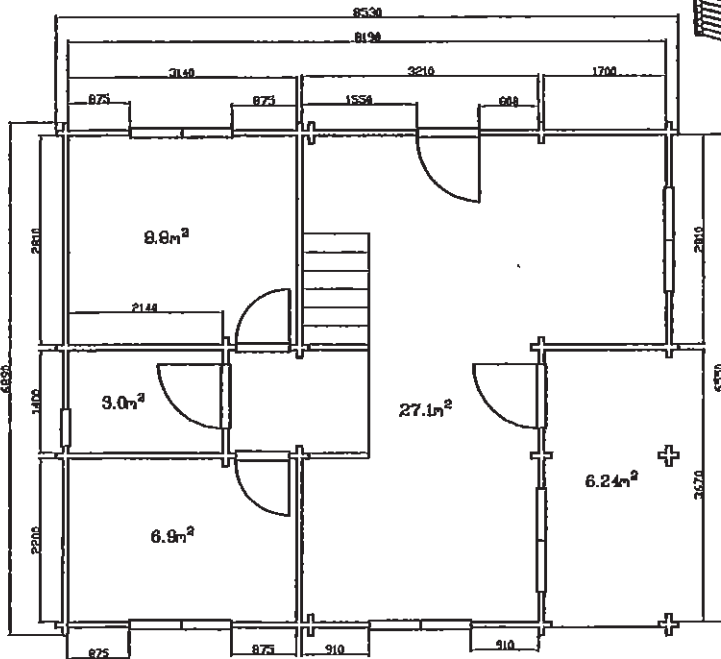
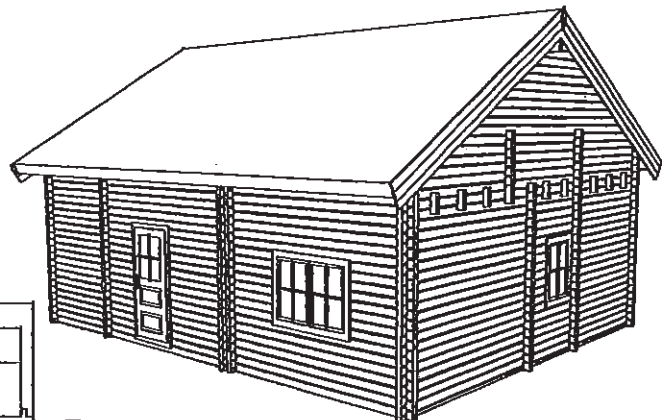
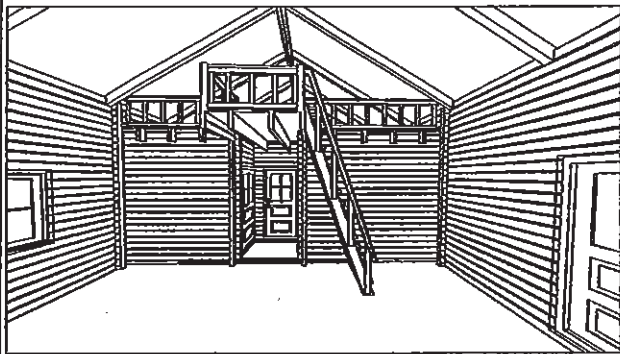
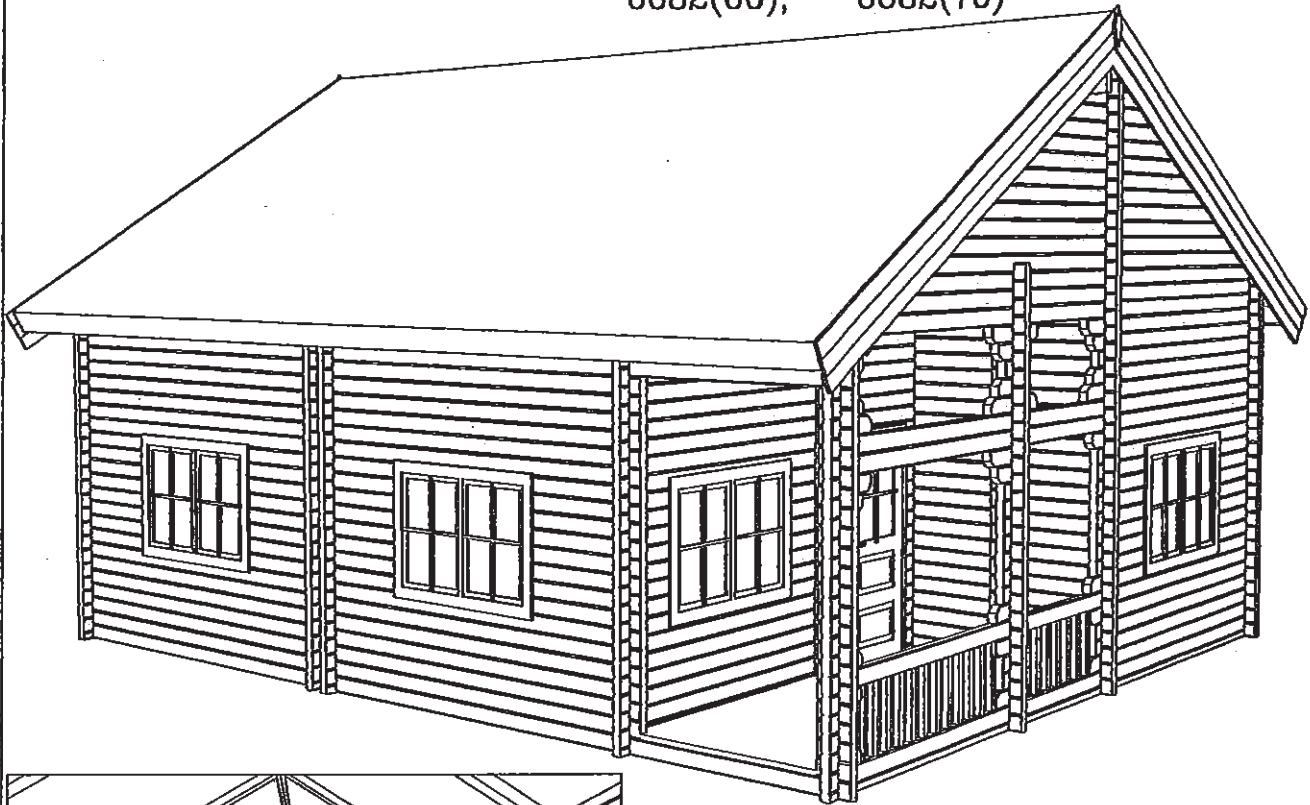


11.16×7.18m (60mm、70mm)
軒の出0.6m /屋根勾配22°

ダブルアガラス付き1
内部アガラス付き4
ダブル窓6

床板22mm /屋根板19mm
棟木・母屋・梁250×60mm
土台140×50mm、70×50mm

6682(60), 6682(70)

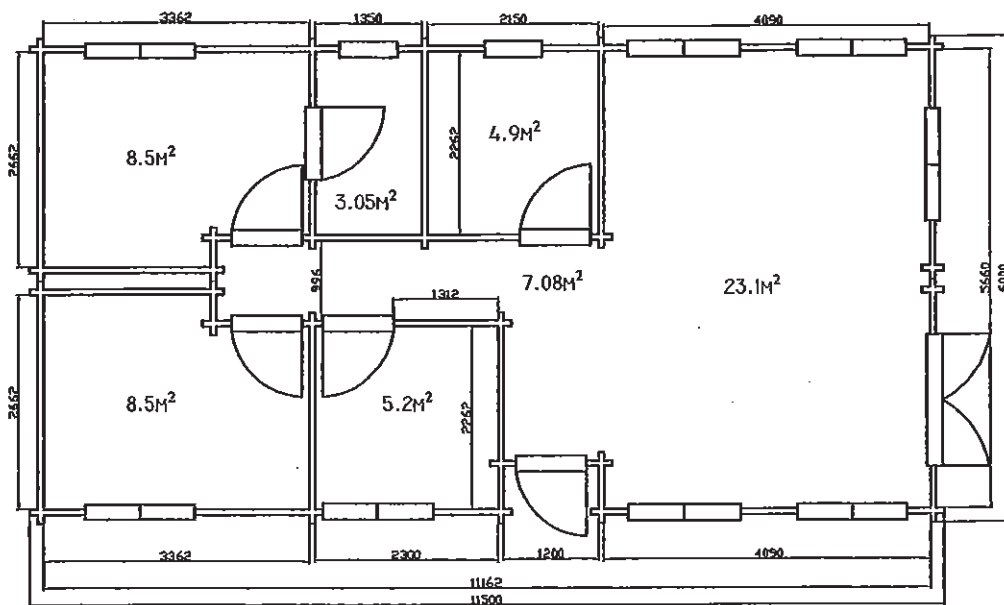
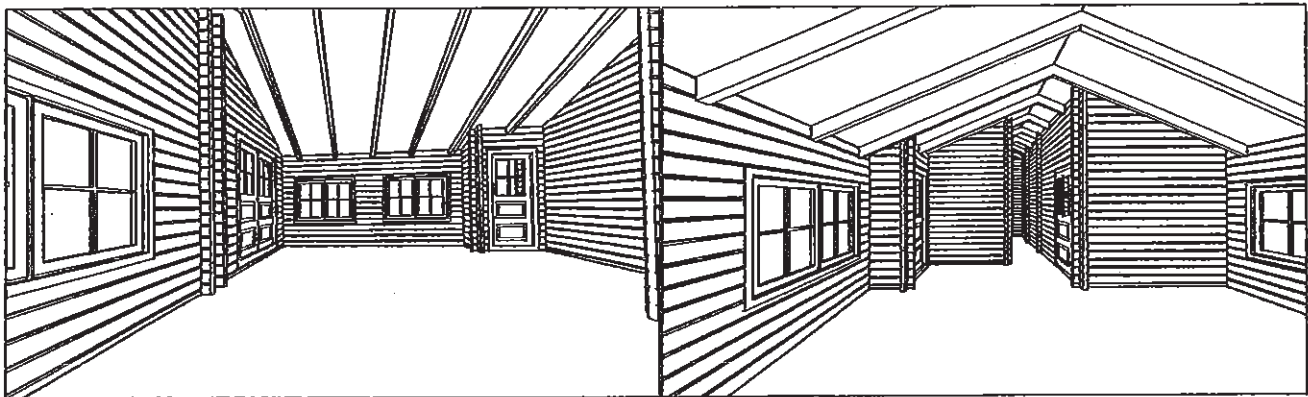
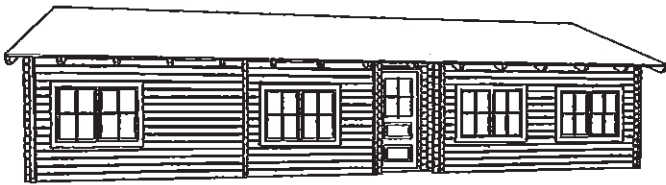
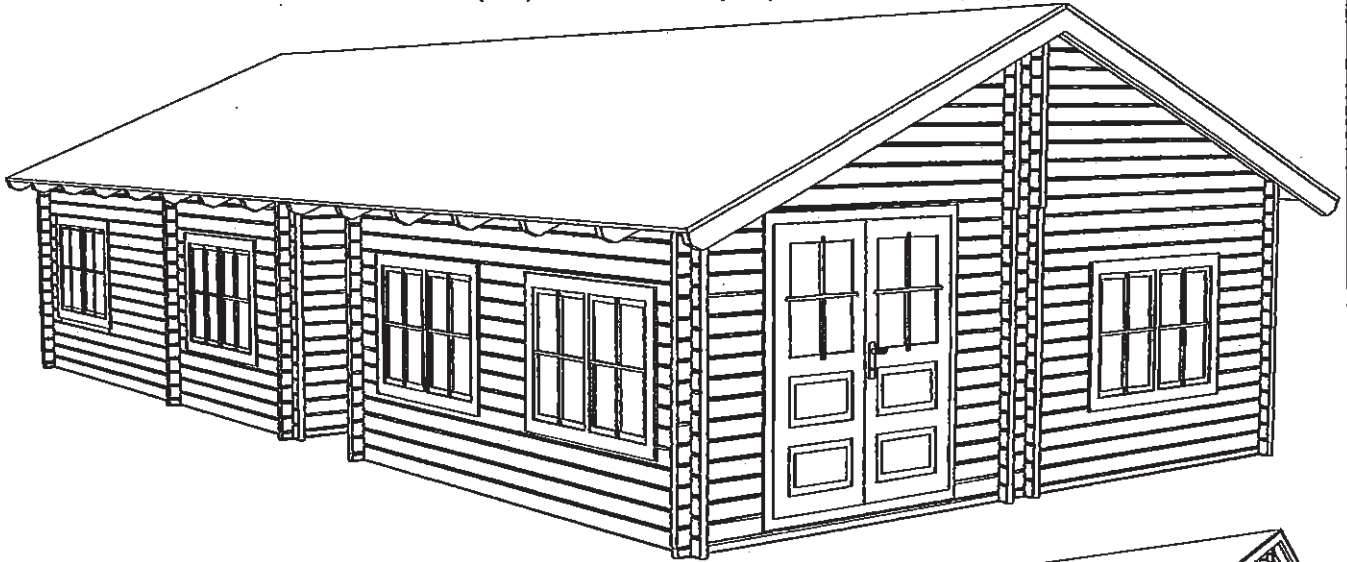


6.55×8.19m (60mm、70mm)
屋根勾配30°

外部ドアガラス付き	1階面積45.8㎡
内部ドアガラス付き3	2階面積21㎡
ダブル窓4 /小窓1	ペランダ6.24㎡

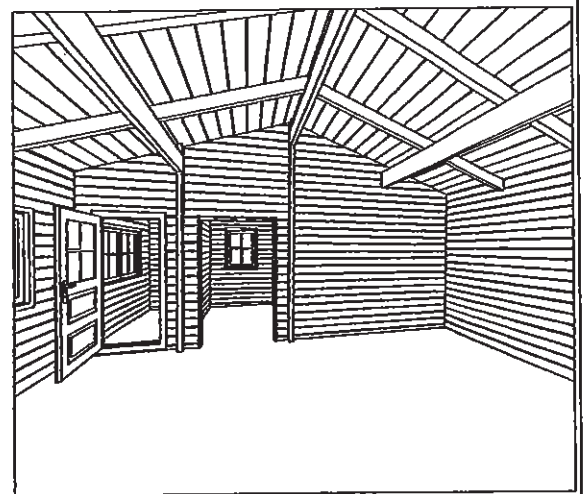
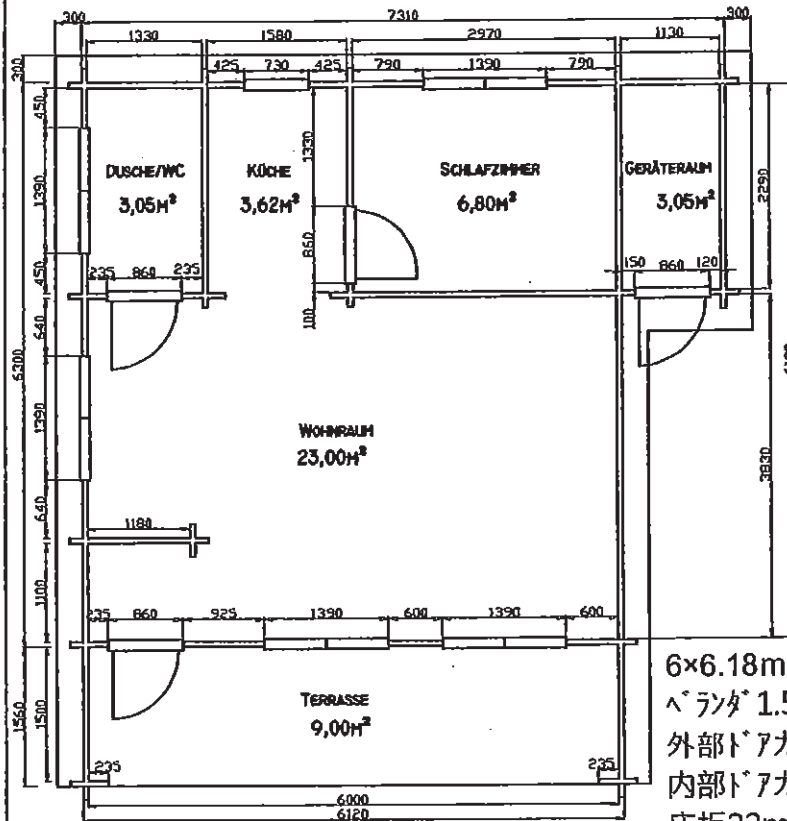
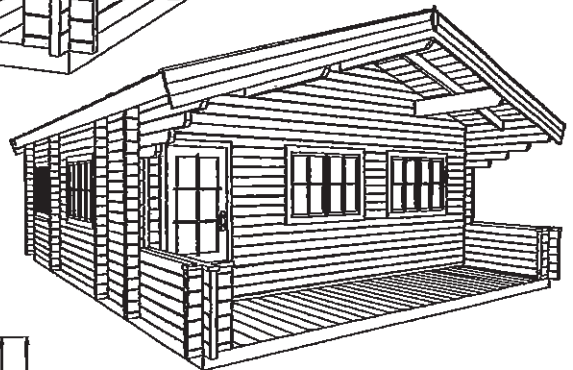
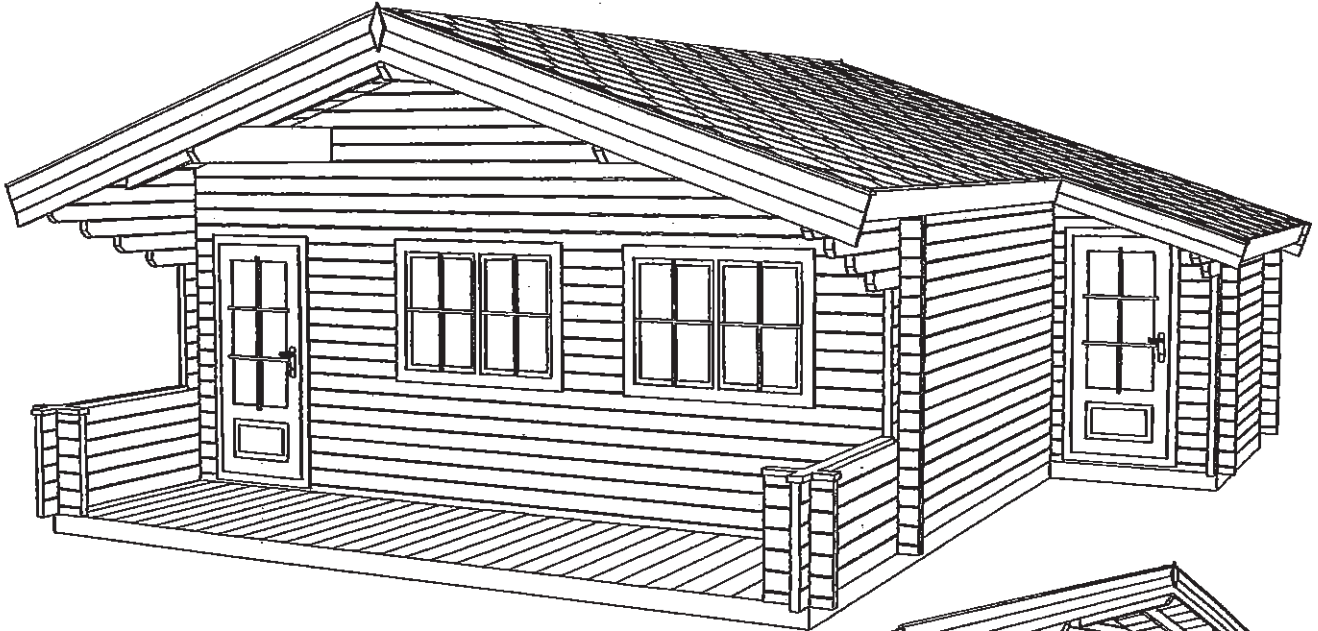
床板22mm
屋根板19mm
垂木・棟木・母屋・梁140×60mm
土台140×50mm・70×50mm
壁の高さ3.25m
屋根最高高さ5.23m

11156(44), 11156(60), 11156(70)



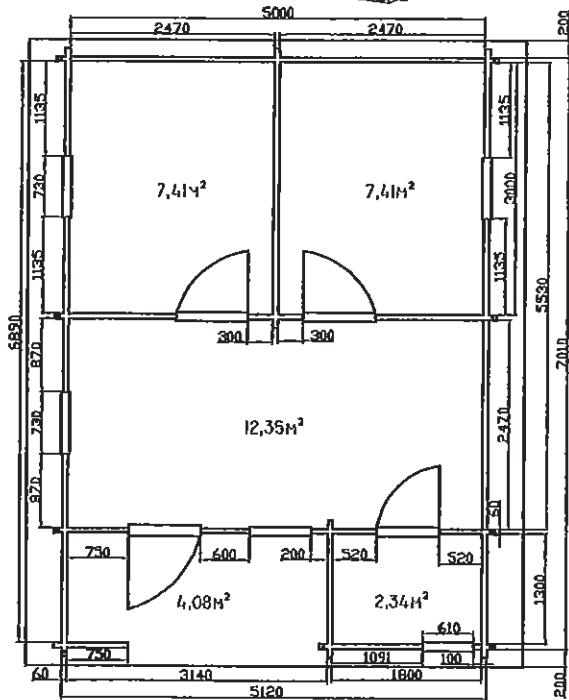
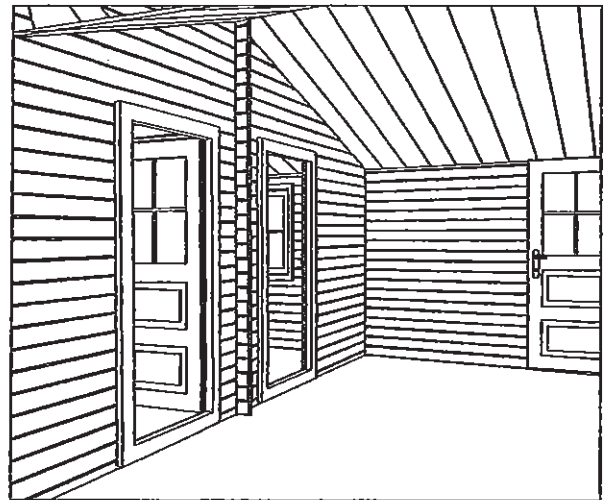
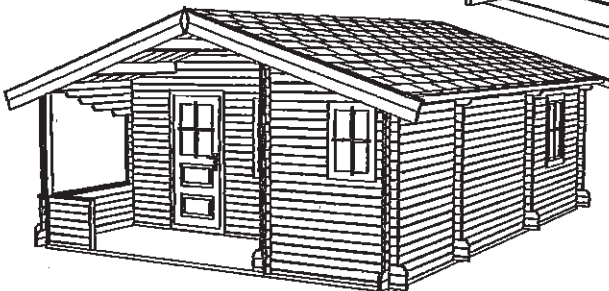
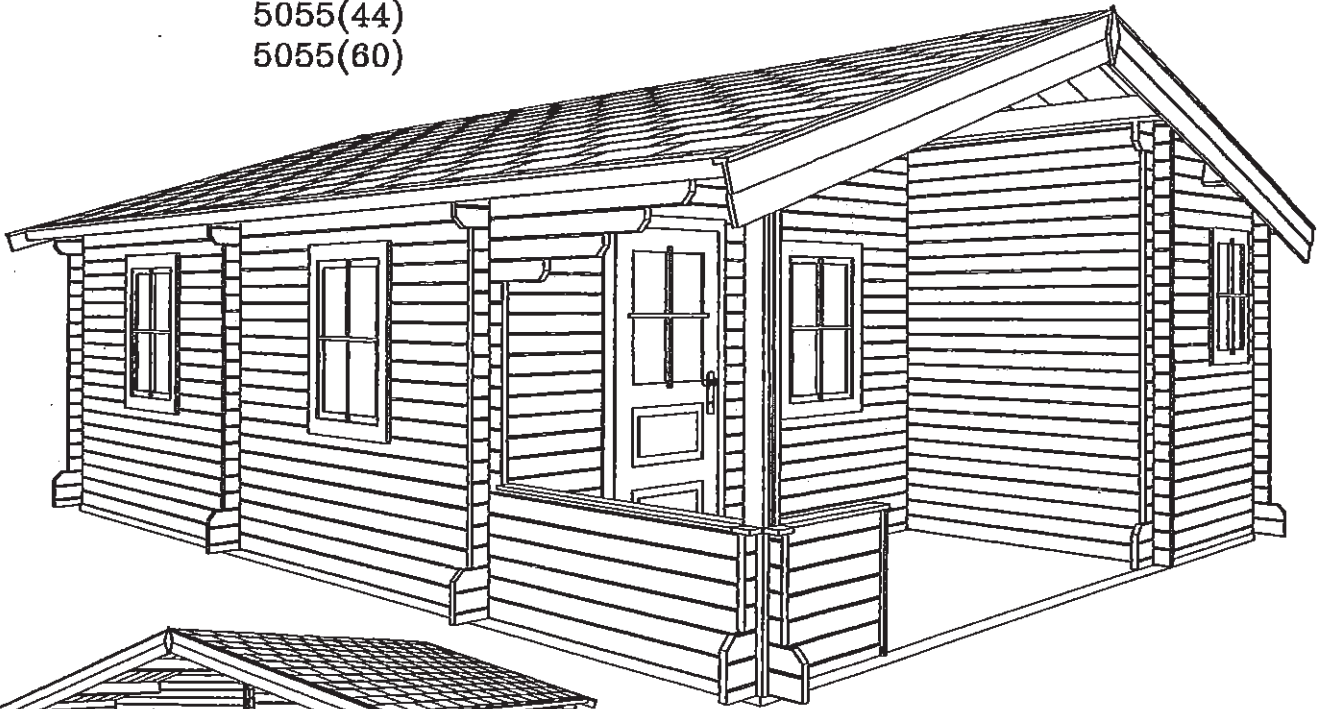
11.19×5.67m (44, 60, 70)
 ダブルペアガラス付き1
 外部ペアガラス付き1
 内部ペアガラス付き5
 ダブル窓8 /窓2
 床板22mm、32mm
 屋根板19mm
 垂木200×60mm
 土台140×50mm、
 70×50mm

6062(60)
6062(70)

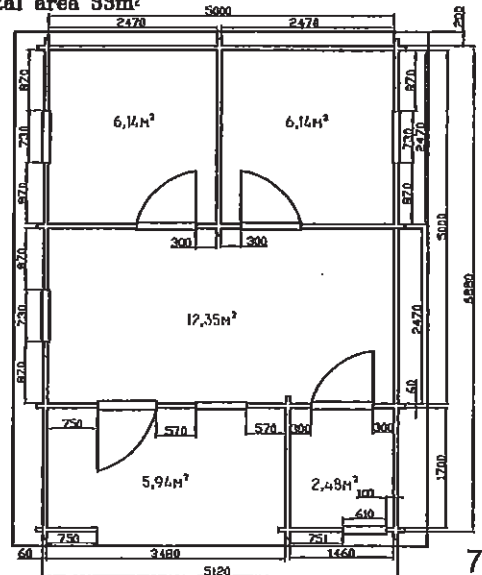


6×6.18m (60mm、70mm)
 ベランダ 1.5m /物入れ1.13×2.29m
 外部ドアガラス付き2
 内部ドアガラス付き2 /ダブル窓5 /窓1
 床板22mm /屋根板19mm /土台140×60mm
 棟木・母屋240×60mm・垂木140×60mm
 壁高さ2.5m /屋根最高高さ3.5m

5055(44)
5055(60)

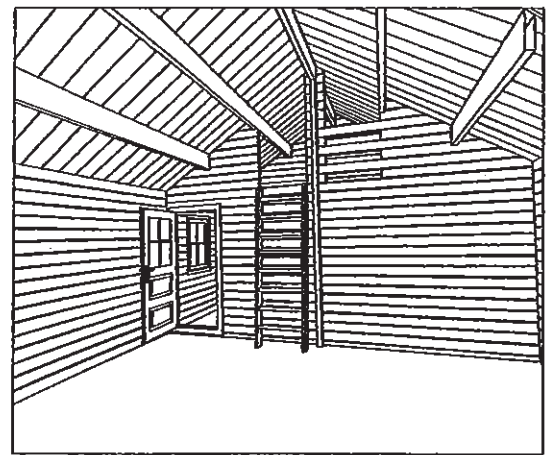
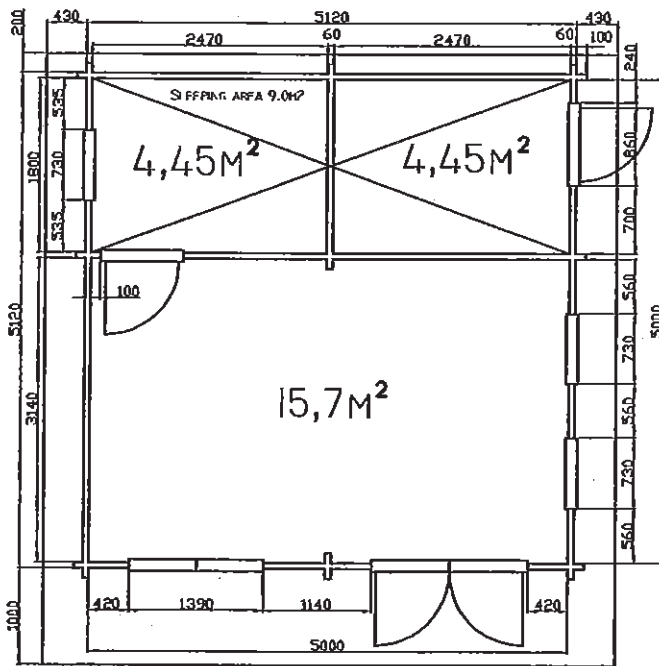
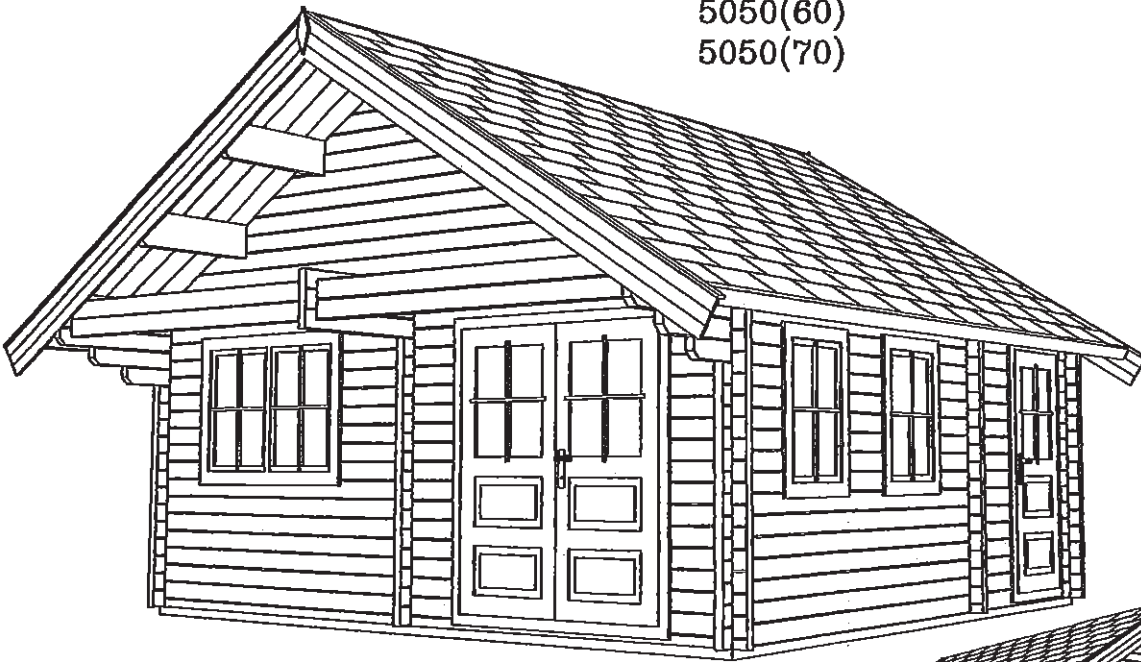


5050(60)
Total area 99m²



5×5.53m (44mm、60mm) +物入れ1.8×1.3m /二重屋根
外部ドアガラス付き2 /内部ドアガラス付き2 /窓5
床板22mm /屋根板19mm+19mm
棟木・母屋190×60mm /土台70×60
壁高さ2.5m
屋根最高高さ3.32m

5050(60)
5050(70)



5×5m (60mm、70mm) /1階23.9㎡・2階9㎡

ダブルアガラス付き1 /ドア1 /内部アガラス付き1 /ダブル窓1 /窓3

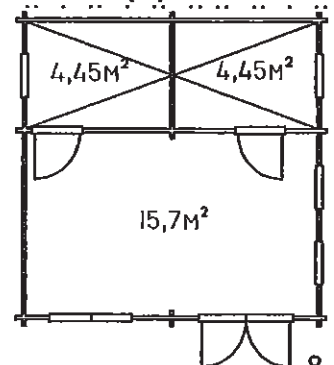
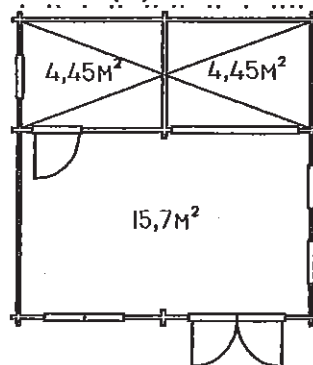
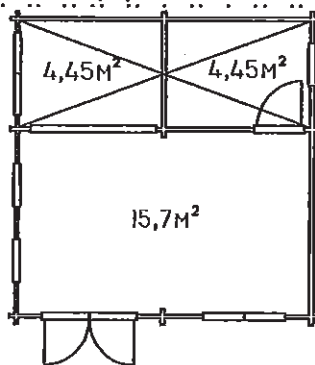
5050(60)

5050(60)

5050(60)

床板22mm
屋根板19mm
棟木・母屋70×60mm
土台190×60

壁高さ2.5m
屋根最高高さ3.81m



5543(44), 5543(60), 5543(70)

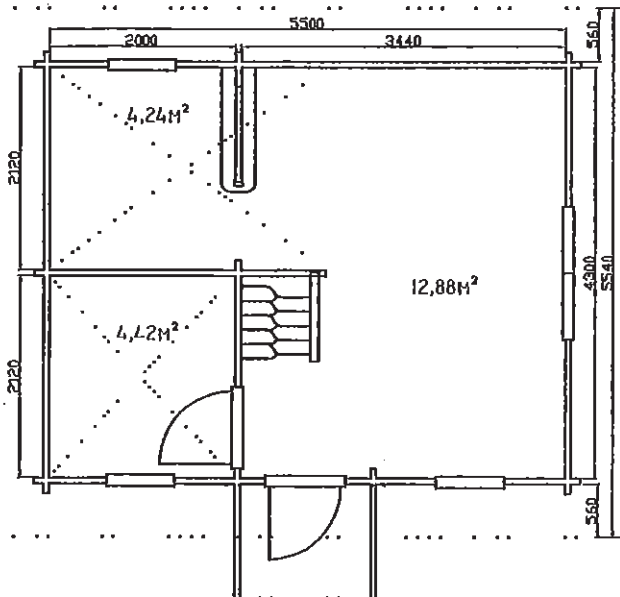
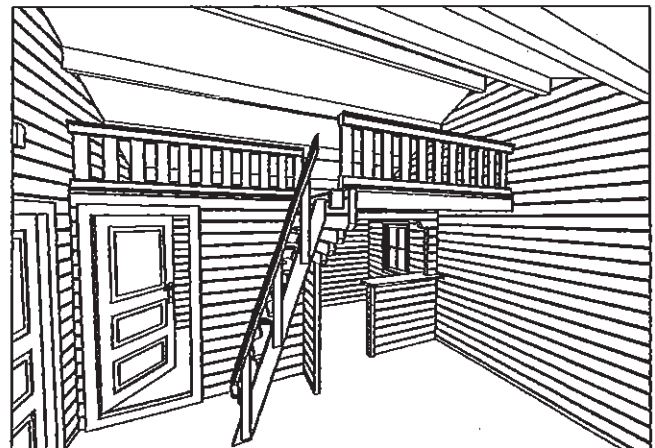


3.76

2.25



0.00



5.50×4.3m (60mm、70mm)

軒の出0.56m

外部ト71 /内部ト71

ダブル窓雨戸付き1

窓雨戸付き3

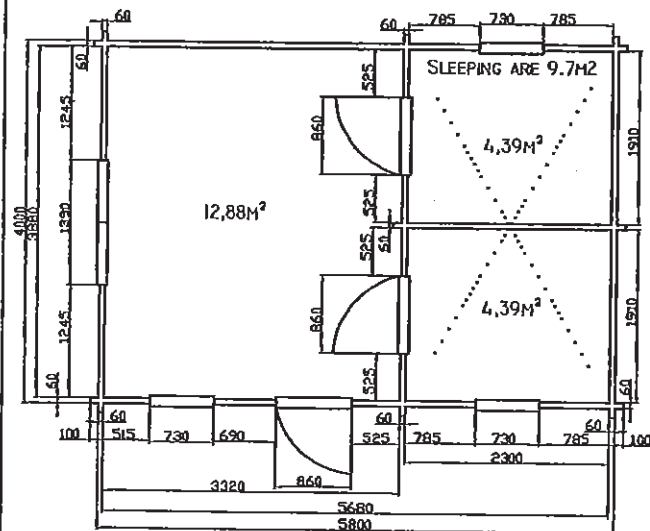
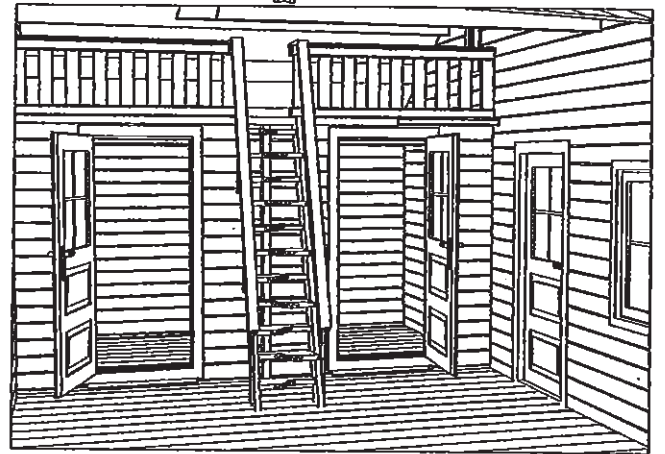
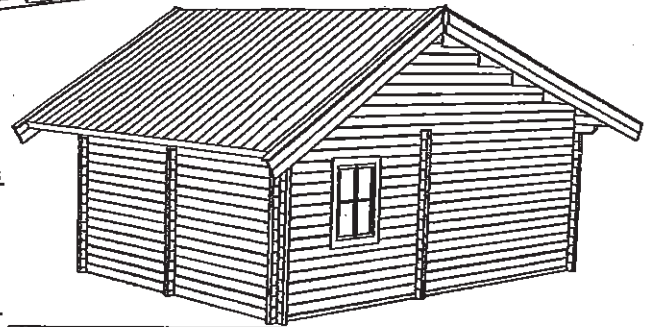
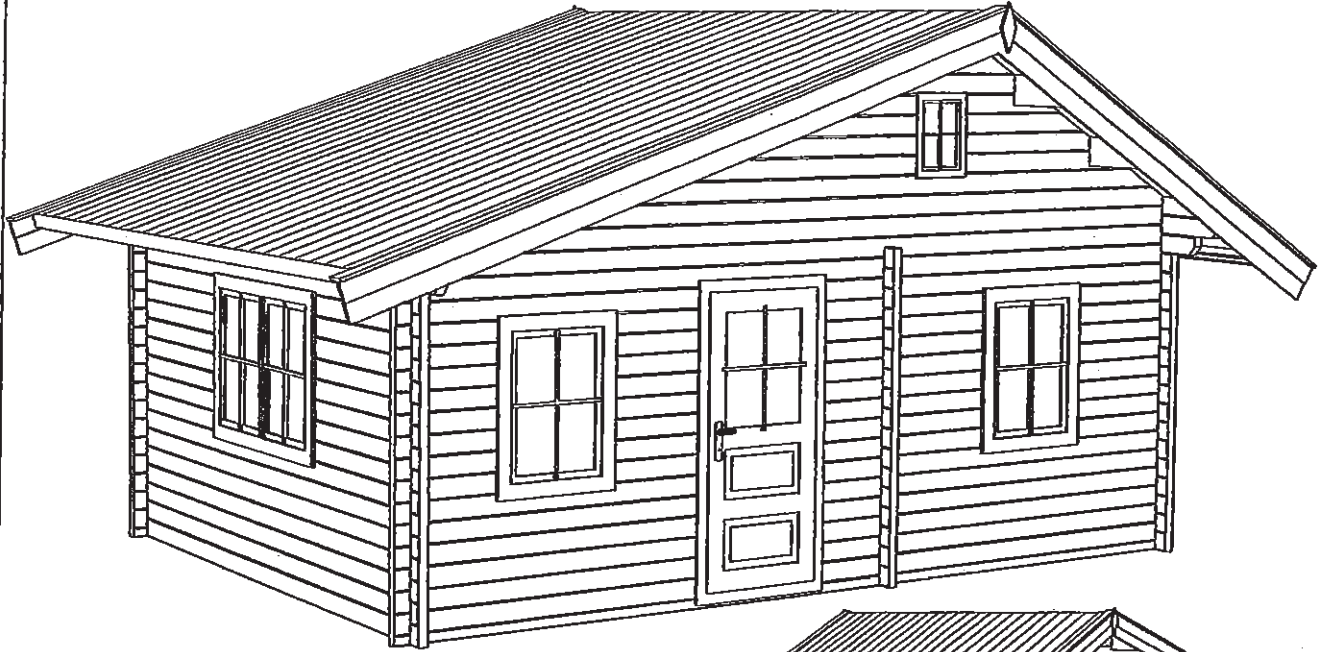
床板22mm /屋根板19mm

棟木・母屋60×180mm・60×140

土台140×60・70×60

1階面積23.36㎡ /外部面積11.5㎡

5739(60), 5739 (70)

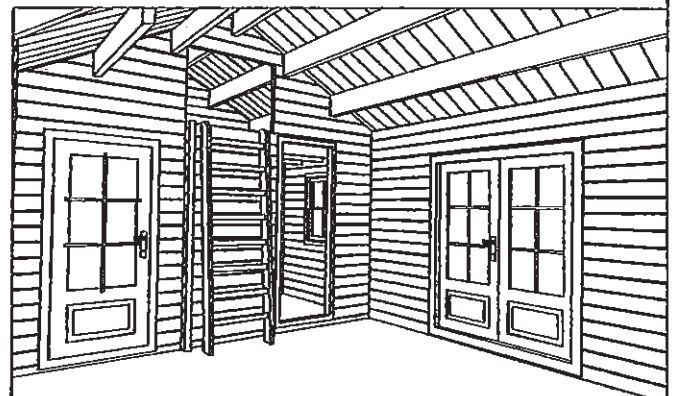
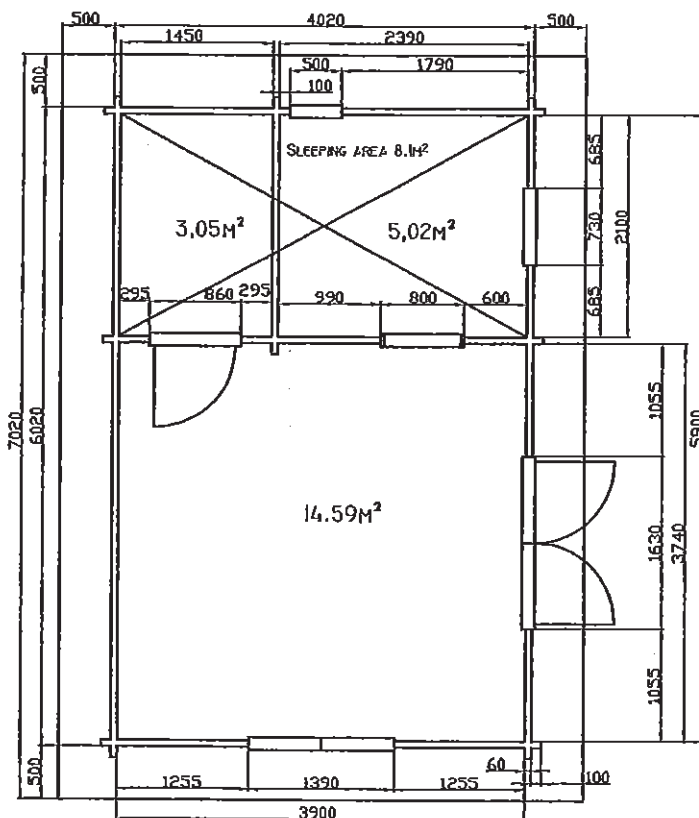
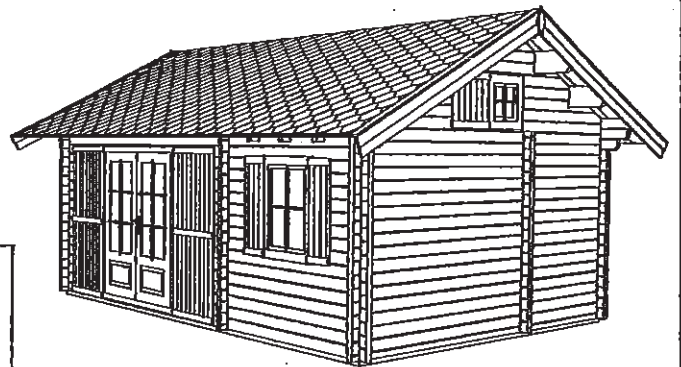
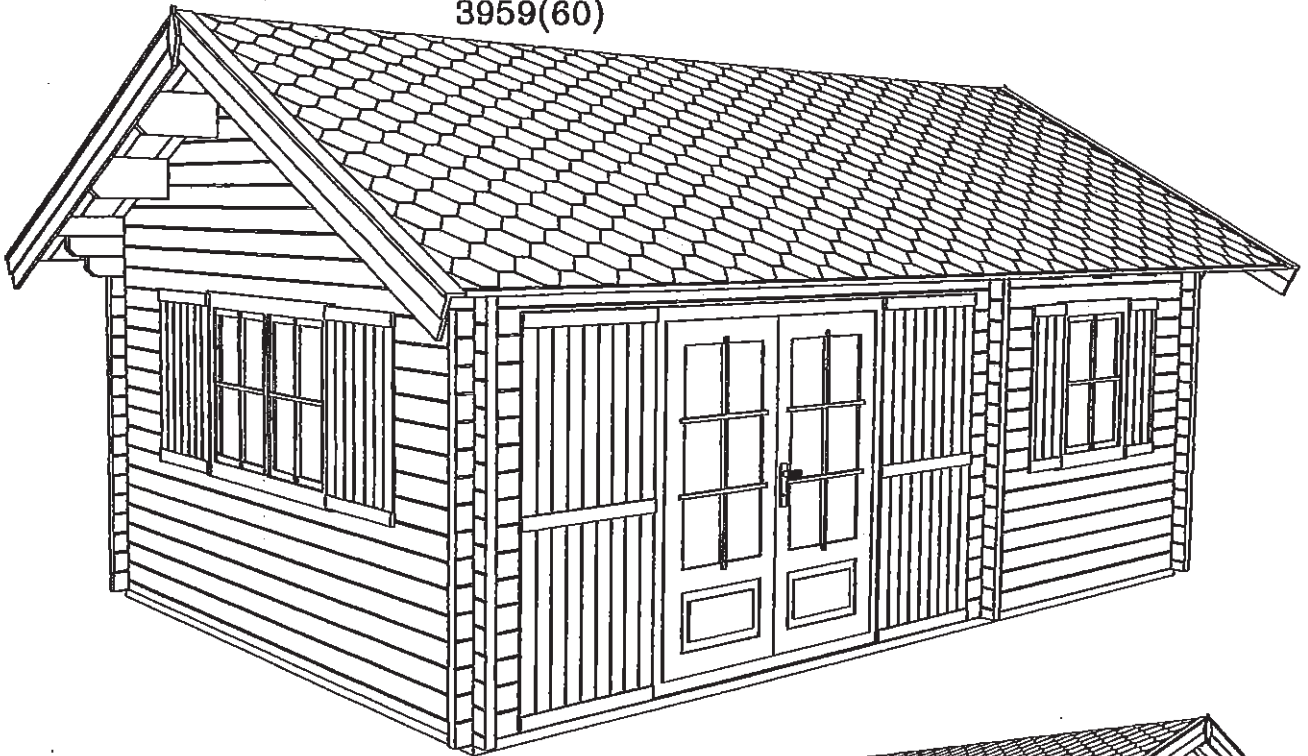


5.7×3.9m (60mm、70mm)
 軒の出0.56m
 外部ドアガラス付き1
 内部ドアガラス付き2
 ダブル窓1 /窓3 小窓1

床板22mm / 屋根板19mm
 棟木・母屋60×180mm
 土台140×60mm・70×60mm
 1階面積22m² / 2階面積9.7m²

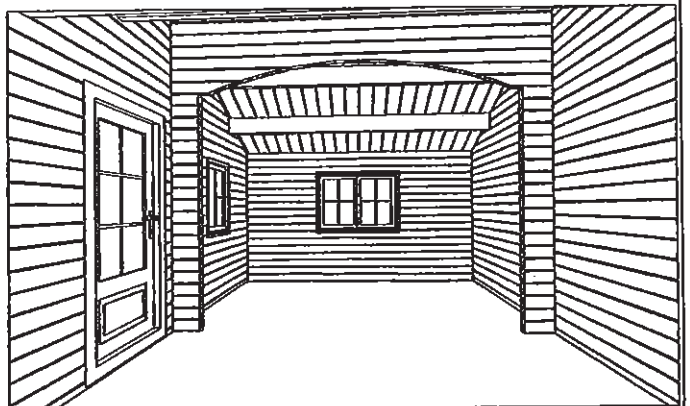
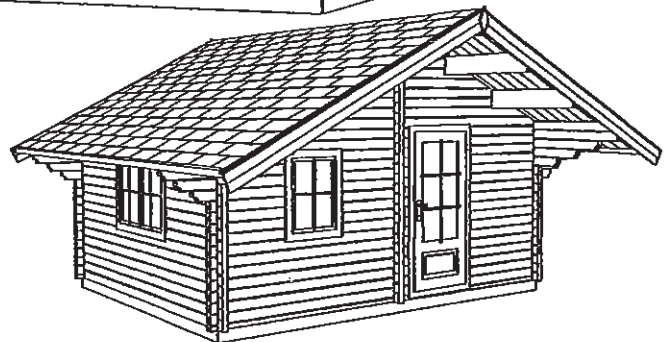
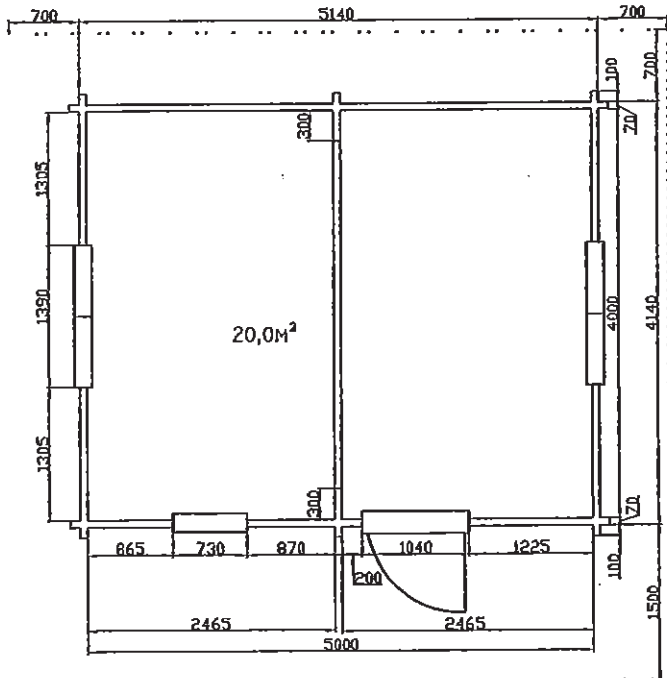
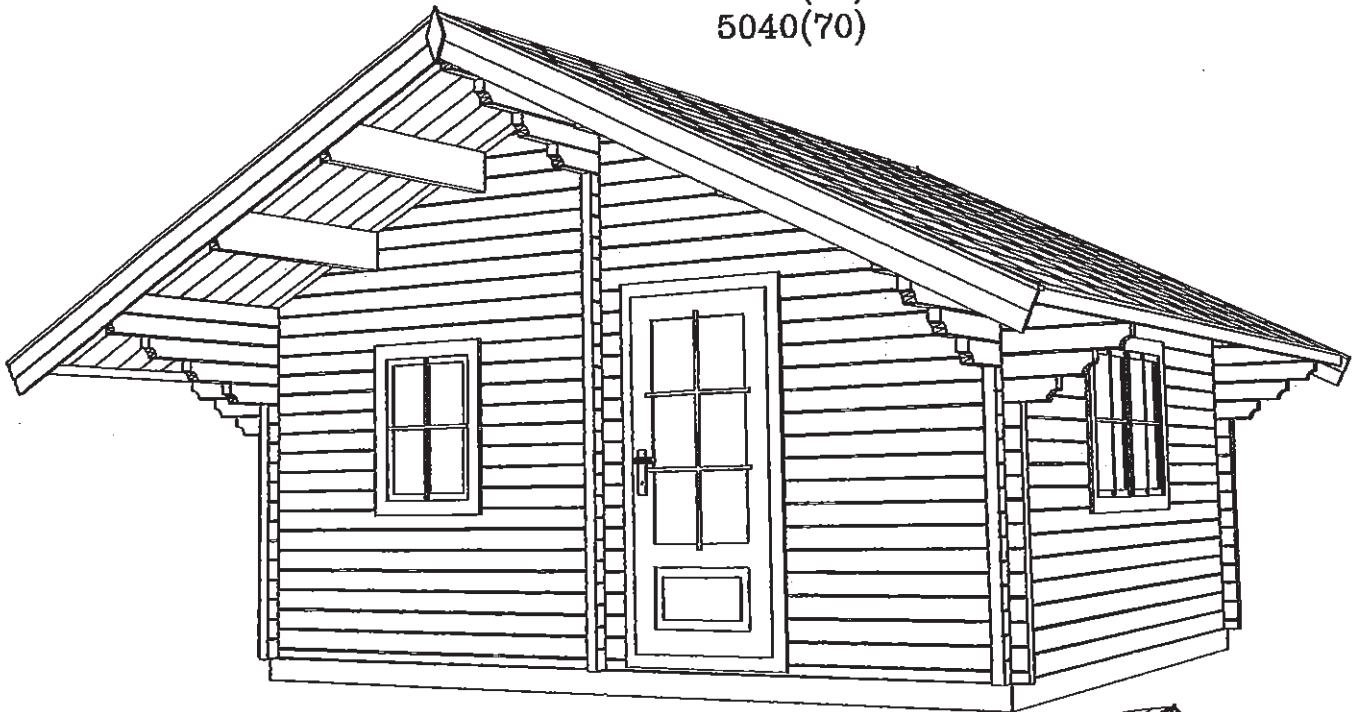
3959(44)

3959(60)



3.9×5.9m (44mm、60mm) 坪8.1㎡
 ダブルドアガラス付き1 /内部ドアガラス付き1
 ダブル窓1 /窓1 小窓1
 床板22mm /屋根板19mm
 棟木・母屋240×60mm
 土台140×44mm・70×44mm
 壁高さ2.35m /屋根最高高さ3.38m

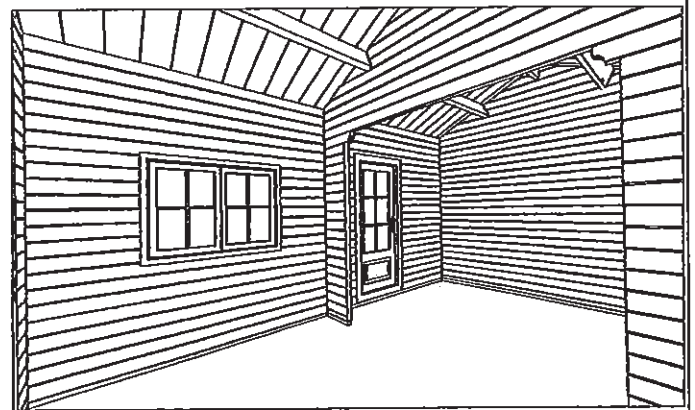
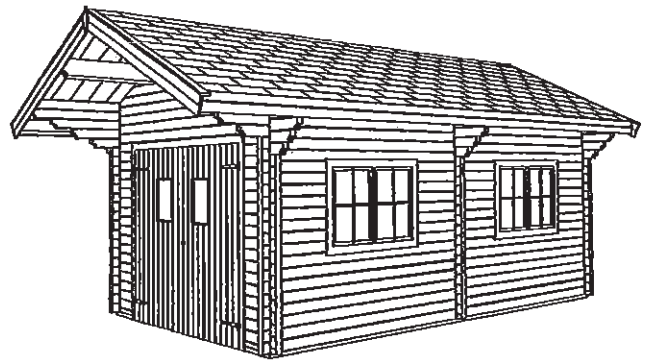
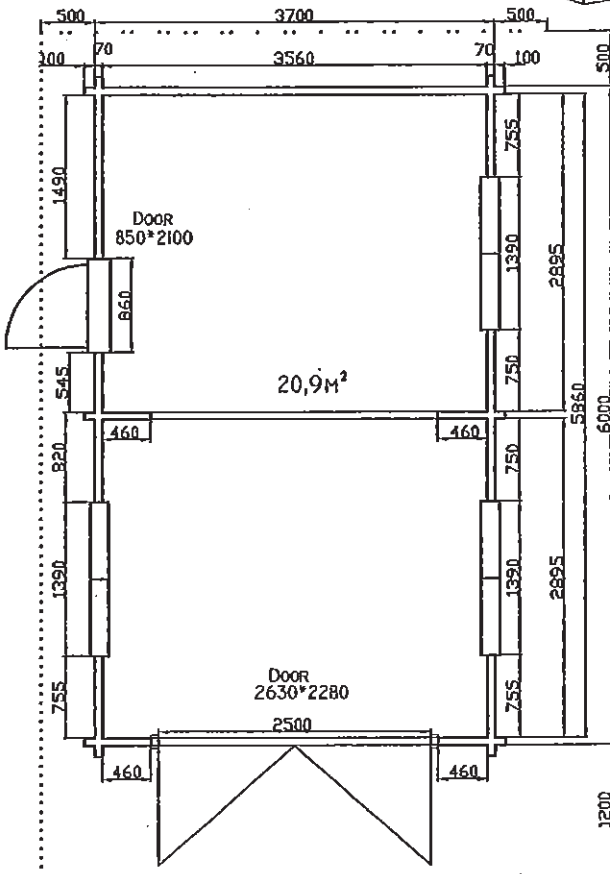
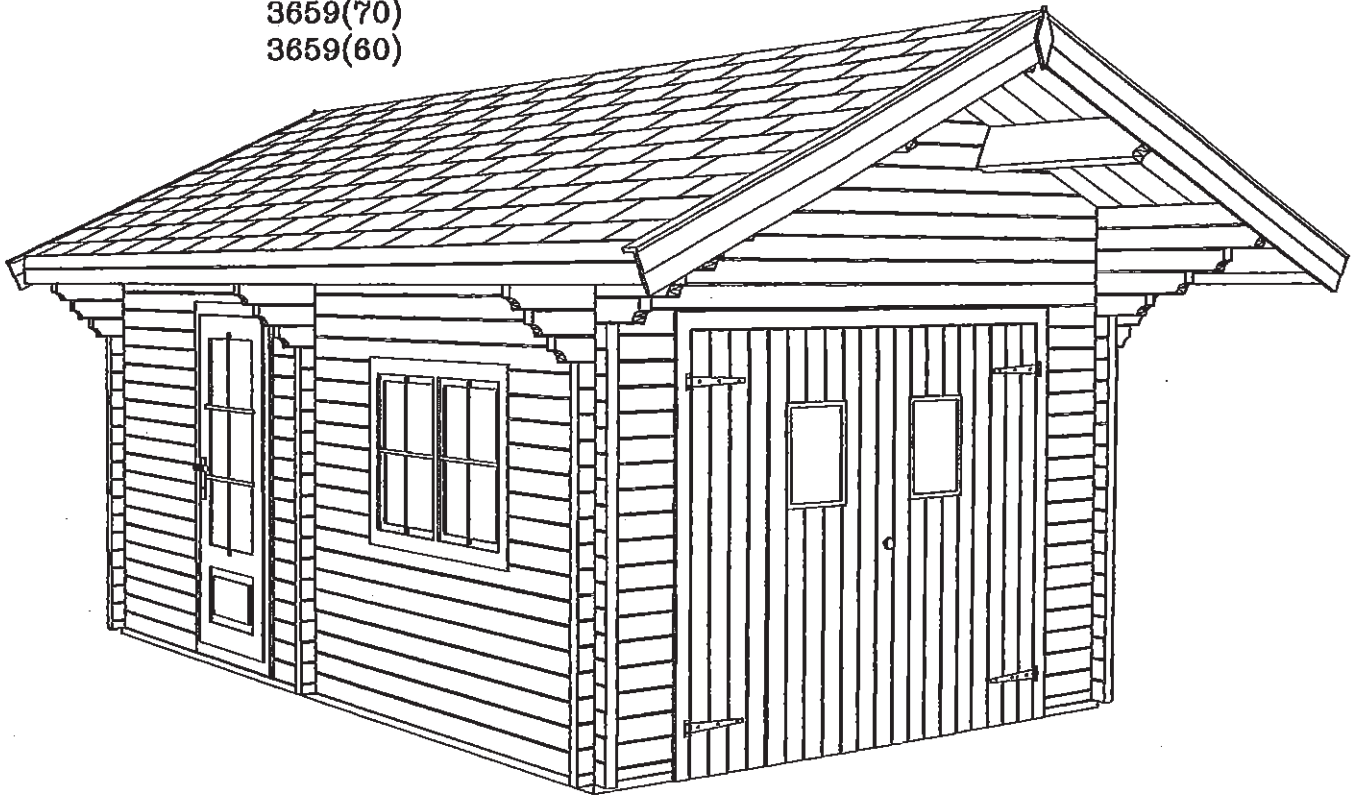
5040(60)
5040(70)



5×4m (60mm、70mm)
外部ドア1 (2.1×1m) /ダブル窓2 /窓1
床板22mm
屋根板19mm
棟木・母屋240×60mm
土台140×100・140×44mm
壁高さ2.25m /屋根最高高さ3.5m

ガレージ

3659(70)
3659(60)



3.56×5.86m (60mm、70mm)

屋根板19mm / 棟木・母屋240×60mm / 土台70×44mm

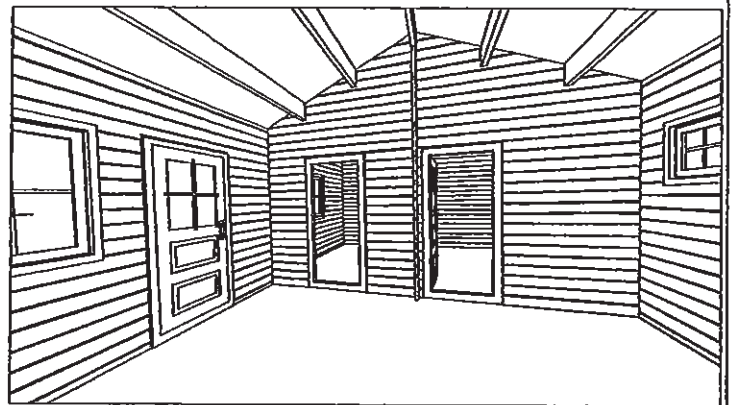
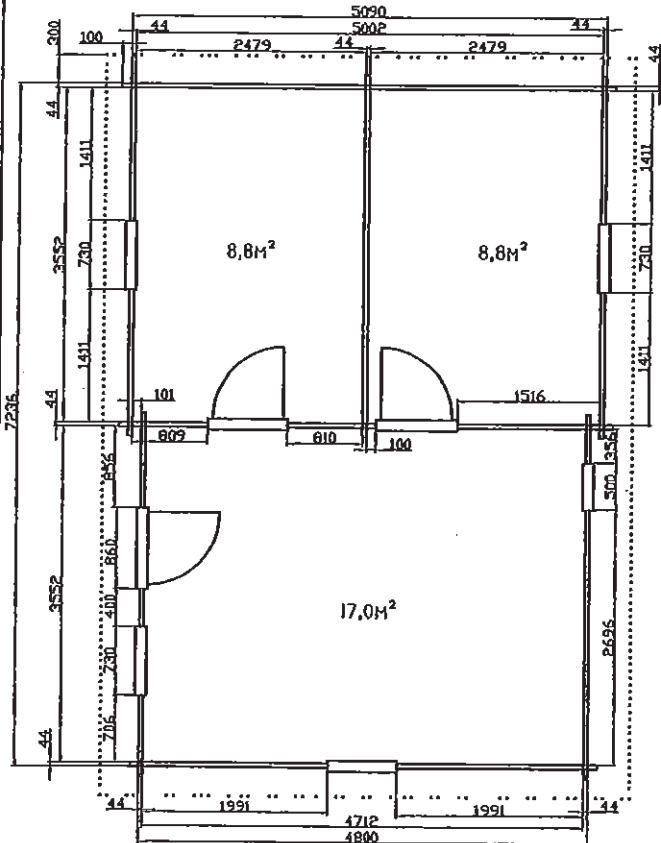
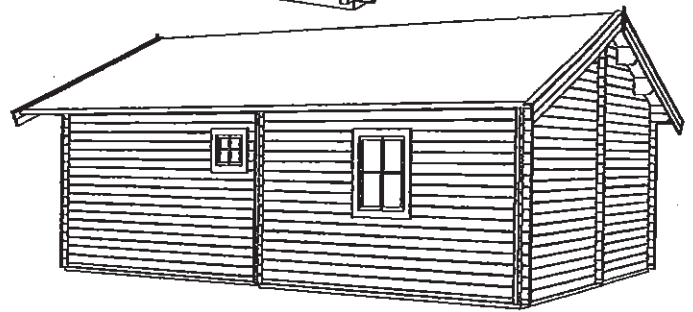
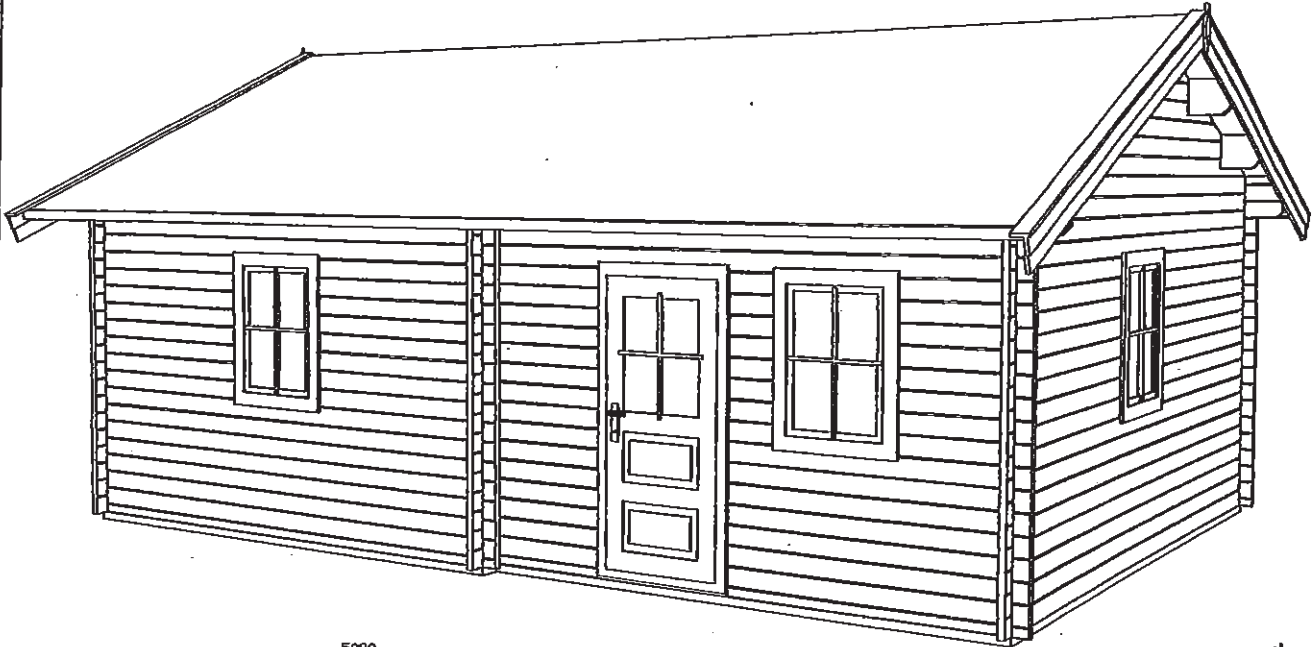
壁高さ2.88m / 屋根最高高さ3.7m

外部ト71 (2.1×0.86m) / ダブル窓3 / ガレージドア (2.1×0.86m) : 開口サイズ 2.5×2.2m

*ガレージドアはオプションです。

5172(44)

5172(60)



5×7.2m (44mm、60mm)

軒の出0.3m

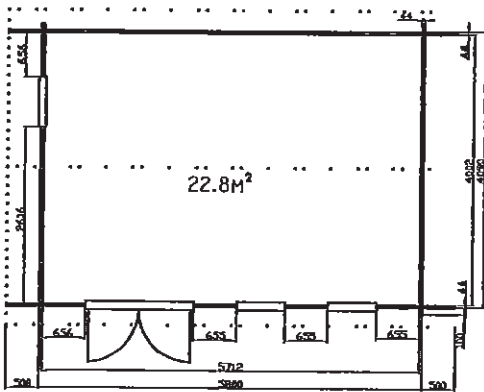
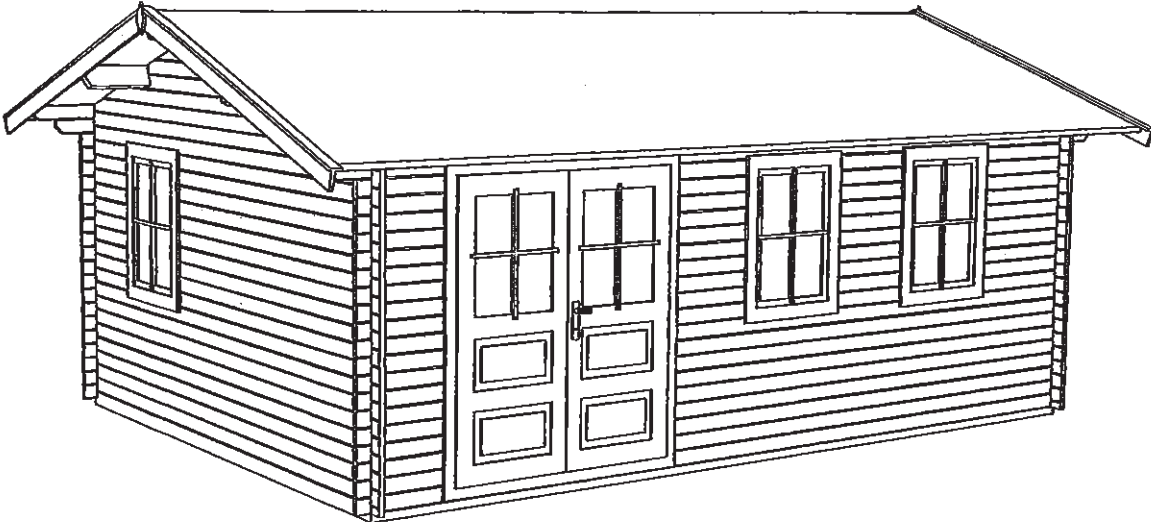
外部ドアガラス付き1 /内部ドアガラス付き2 /窓4 /小窓1

床板22mm /屋根板19mm /棟木・母屋240×60mm

土台140×44mm・70×44mm

壁高さ2.5m /屋根最高高さ3.5m

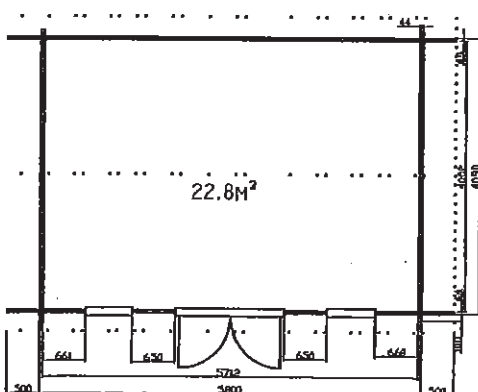
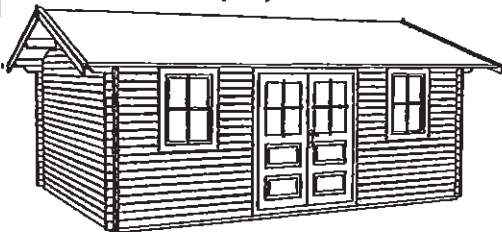
4057(44)



4×5.7m (44mm) /軒の出0.5m
 ダブルドアガラス付き1 /窓3 (内開き)
 床板22mm /屋根板19mm+19mm
 棟木・母屋240×60mm
 土台100×40mm・50×40mm

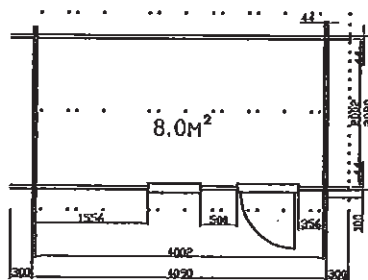
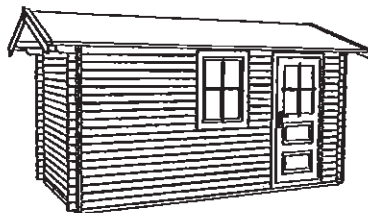
壁高さ2.19m
 屋根最高高さ2.84m

4057(44)



4×5.7m (44mm) /軒の出0.5m
 壁高さ2.19m
 屋根最高高さ2.84m

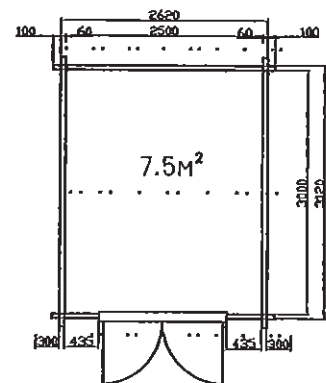
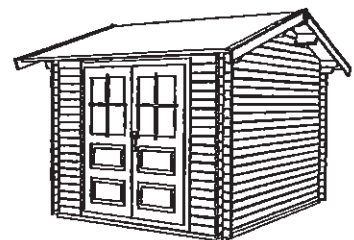
2040(44)



2×4m (44mm) /軒の出0.3m
 壁高さ2.19m
 屋根最高高さ2.52m

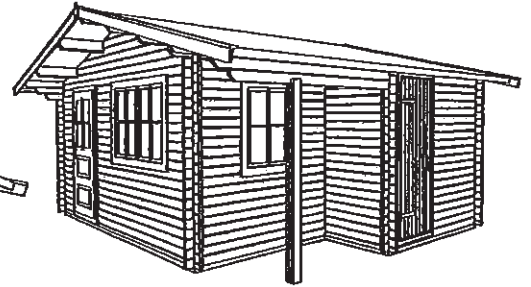
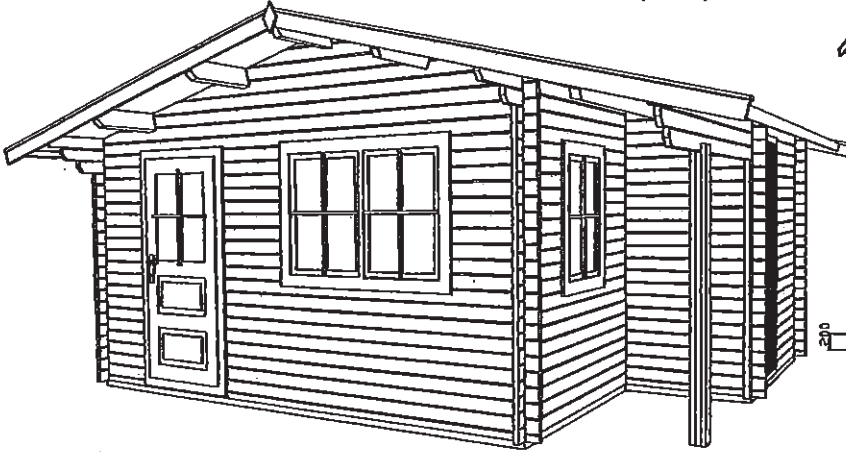
床板22mm /屋根板19mm
 棟木・母屋140×44mm
 土台100×40mm・50×40mm

3025(60)



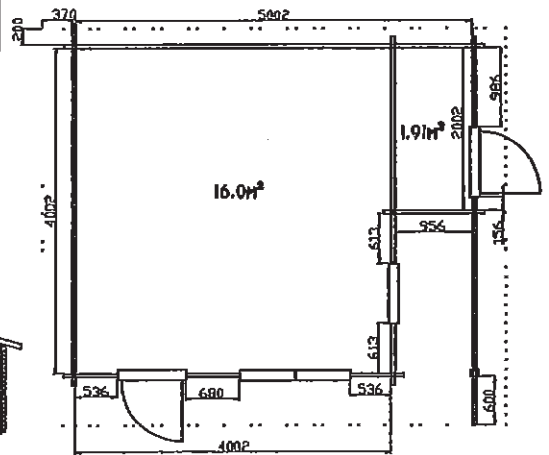
3×2.5m (60mm)
 軒の出0.3m
 壁高さ2.19m
 屋根最高高さ2.68m

5040(44)

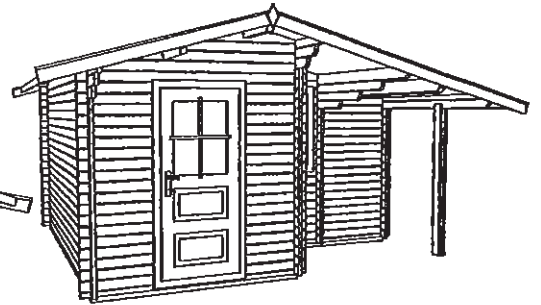
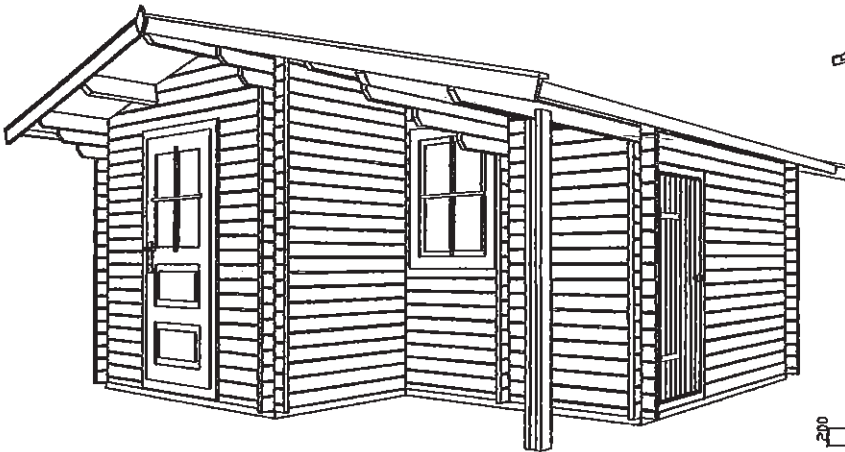


5×4m (44mm) /軒の出0.6m
 外部ドアガラス付き1
 ダブル窓1 /窓1 (内開き)
 壁の高さ2.13m
 屋根最高高さ2.78m

床板22mm /屋根板19mm
 棟木・母屋140×60mm
 土台100×40mm、50×40mm

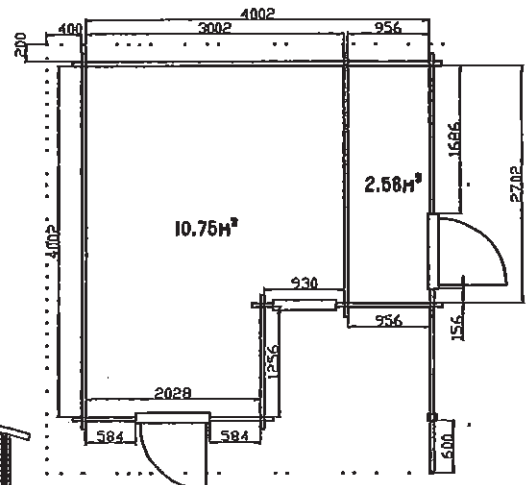


4040(44)

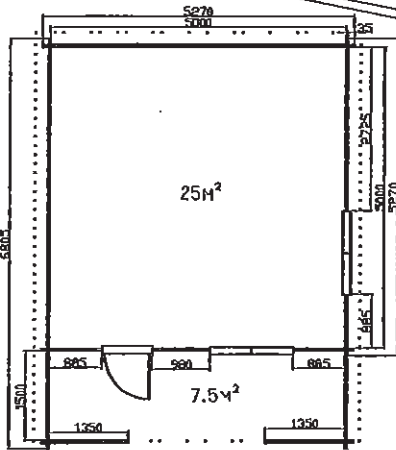
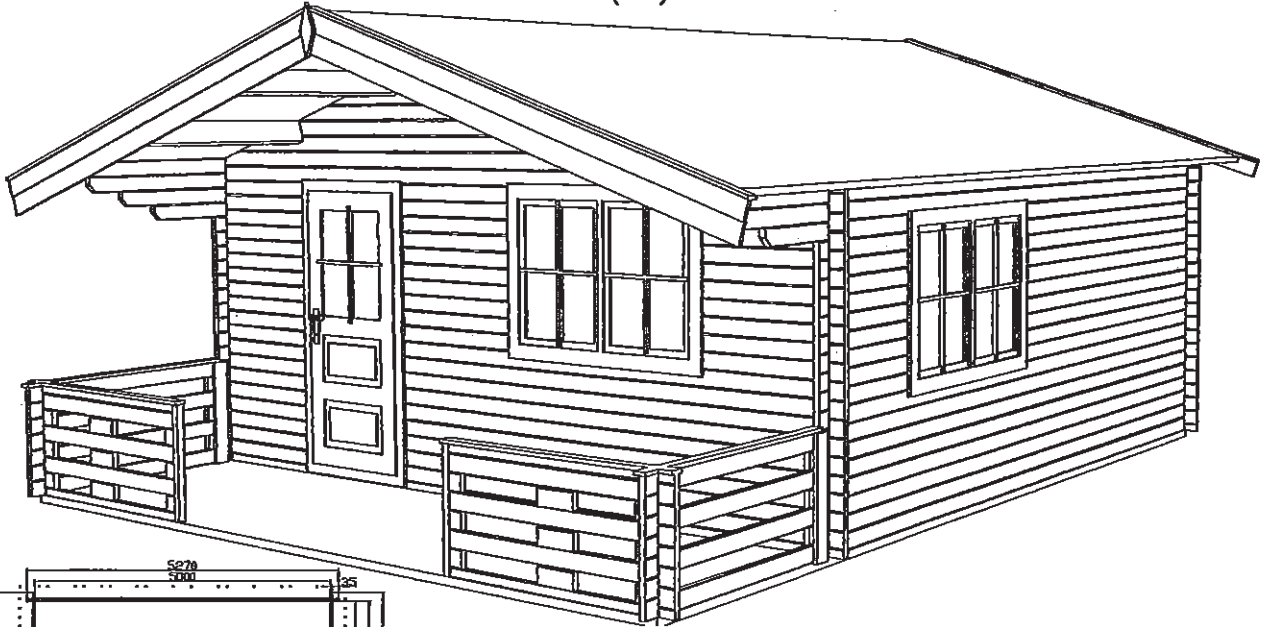


4×4m (44mm) /軒の出0.6m
 外部ドアガラス付き1 /
 ダブル窓1 /窓1 (内開き)
 壁の高さ2.13m
 屋根最高高さ2.55m

床板22mm /屋根板19mm
 棟木・母屋140×60mm
 土台100×40mm、50×40mm



5050(35)
5050(44)
5050(60)

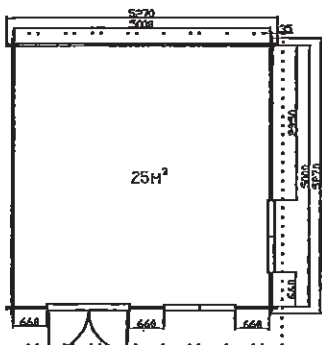


5×5m (35mm、44mm、60mm) /軒の出1.5m
ベランダ付き
外部ドアガラス付き1 /ダブル窓2

床板22mm /屋根板19mm /土台100×40mm、50×40mm
棟木・母屋240×60mm

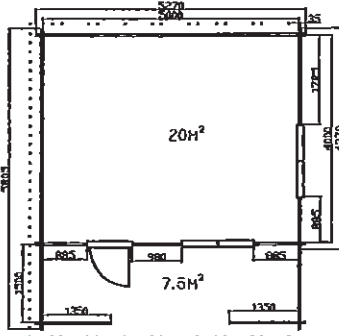
壁高さ2.1m
屋根最高高さ2.97m

5050(35)
5050(44)
5050(60)



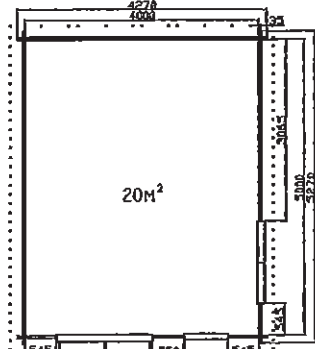
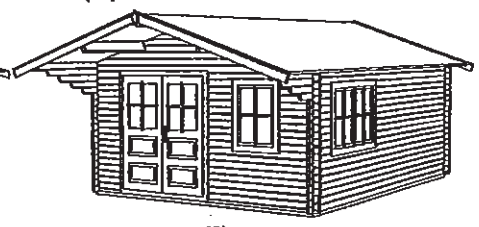
5×5m /軒の出0.7m
Wドアガラス付き1 /W窓2

5040(35)
5040(44)
5040(60)



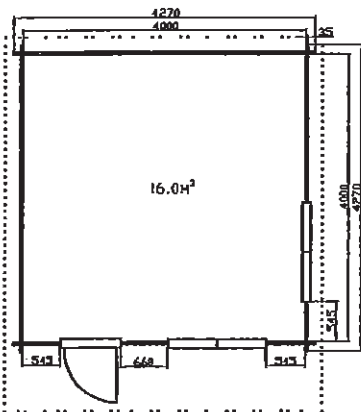
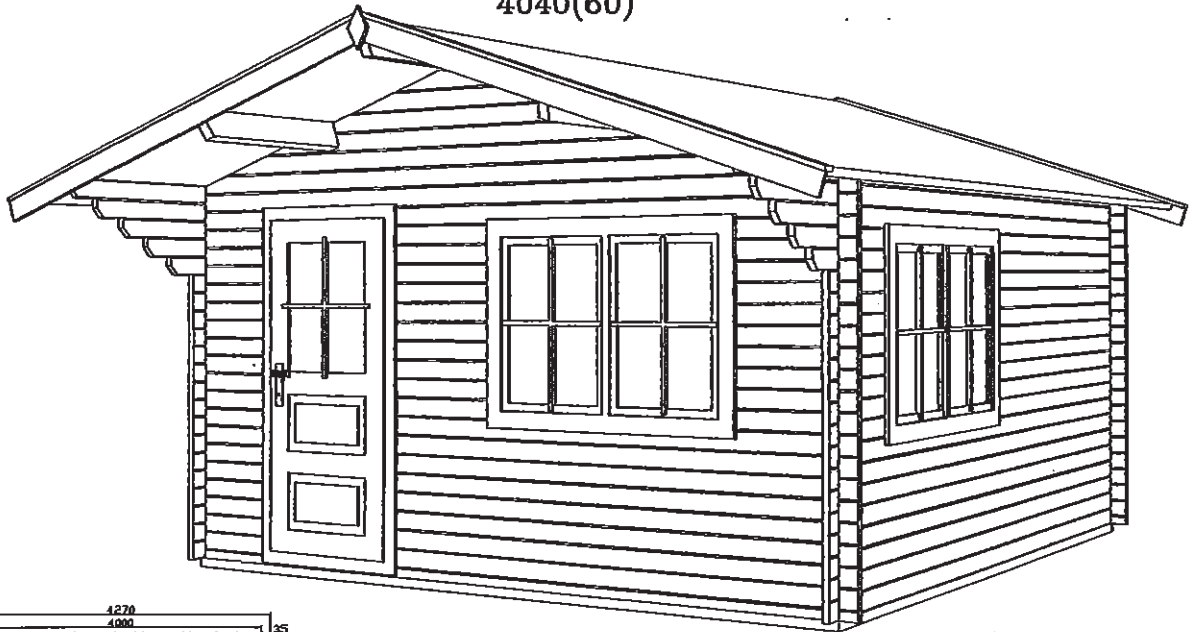
5×4m /軒の出1.8m
ベランダ1.5m

4050(35)
4050(44)
4050(60)



4×5m / 軒の出0.7m /W71 /W窓1

4040(35)
4040(44)
4040(60)

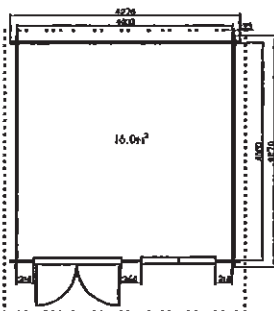


4×4m (35mm、44mm、60mm)
軒の出1mまたは1.5m
外部ドアガラス付き1 /ダブル窓2 (内開き)

床板22mm /屋根板19mm
棟木・母屋140×60mm
土台100×40mm・50×40mm

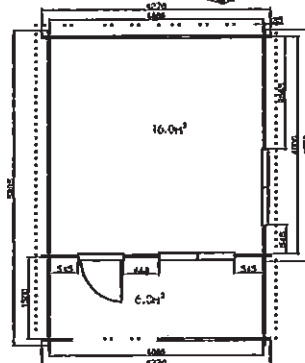
壁高さ2.1m
屋根最高高さ2.77m

4040(44)
4040(80)



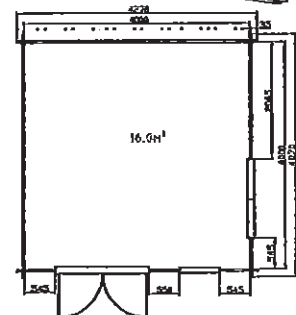
4×4m /軒の出1m
ダブルドア1 /W窓1

4040(44)
4040(80)



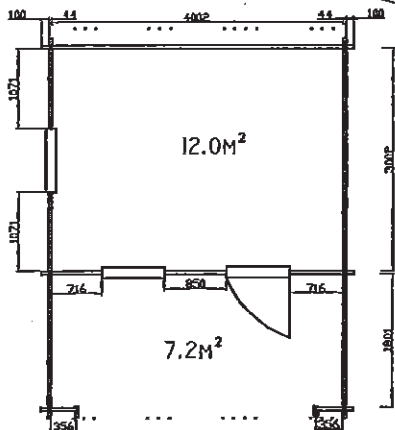
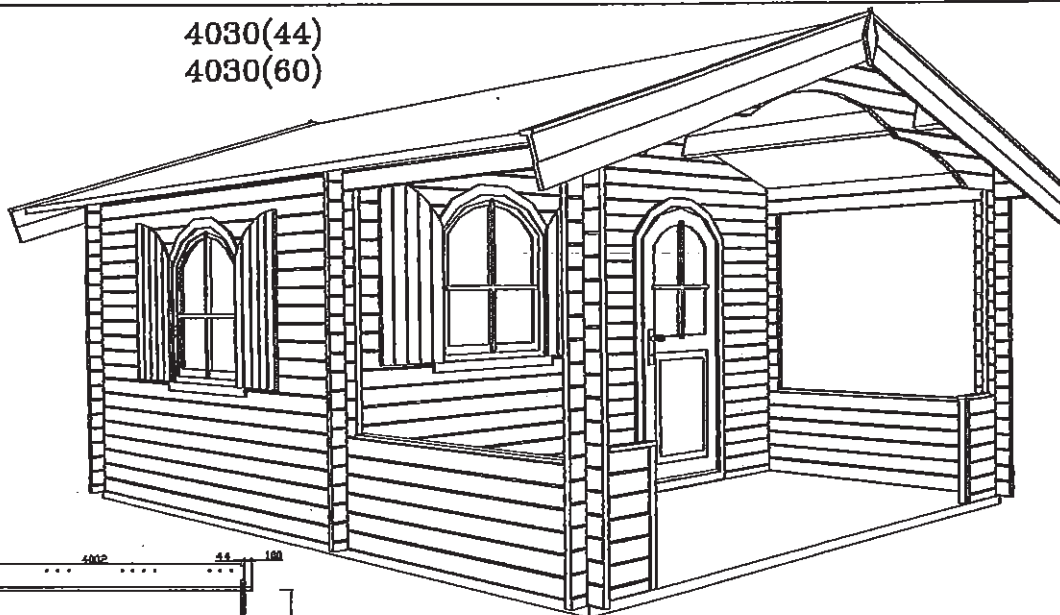
4×4 /軒の出1.5m
ベランダ1.5m /ドア1 /ダブル窓2

4040(44)
4040(80)



4×4/軒の出1m
ダブルドア1 /ダブル窓1 /窓1

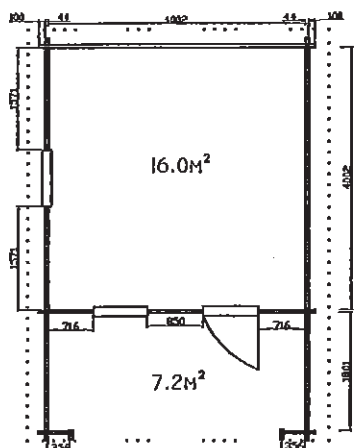
4030(44)
4030(60)



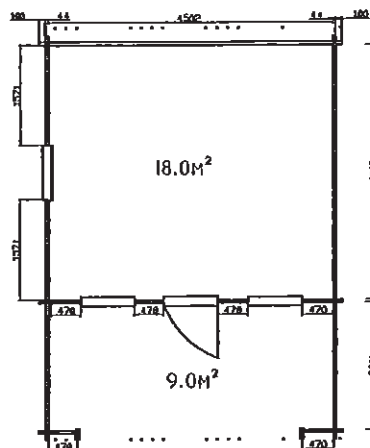
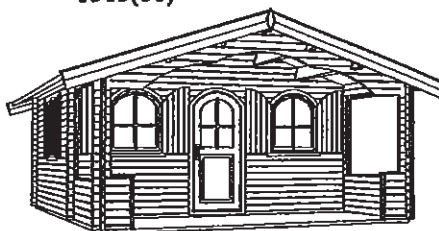
4×3 (44、60mm)
軒の出2m /ベランダ1.8m
アーチドアガラス付き1
アーチ窓雨戸付き2

床板22mm /屋根板19mm
棟木・母屋140×60mm、240×60mm
土台100×40mm、50×40mm

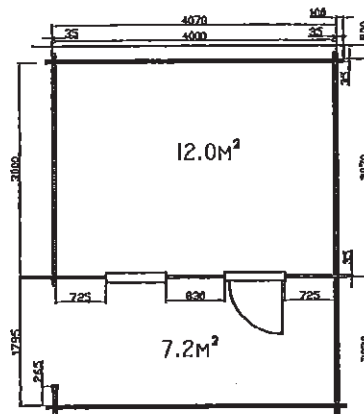
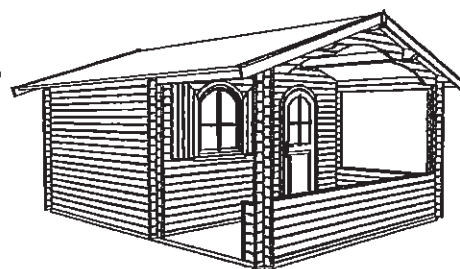
4040(44)
4040(60)



4540(44)
4540(60)

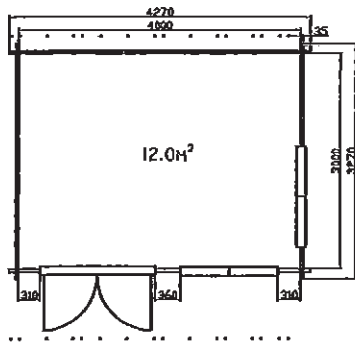
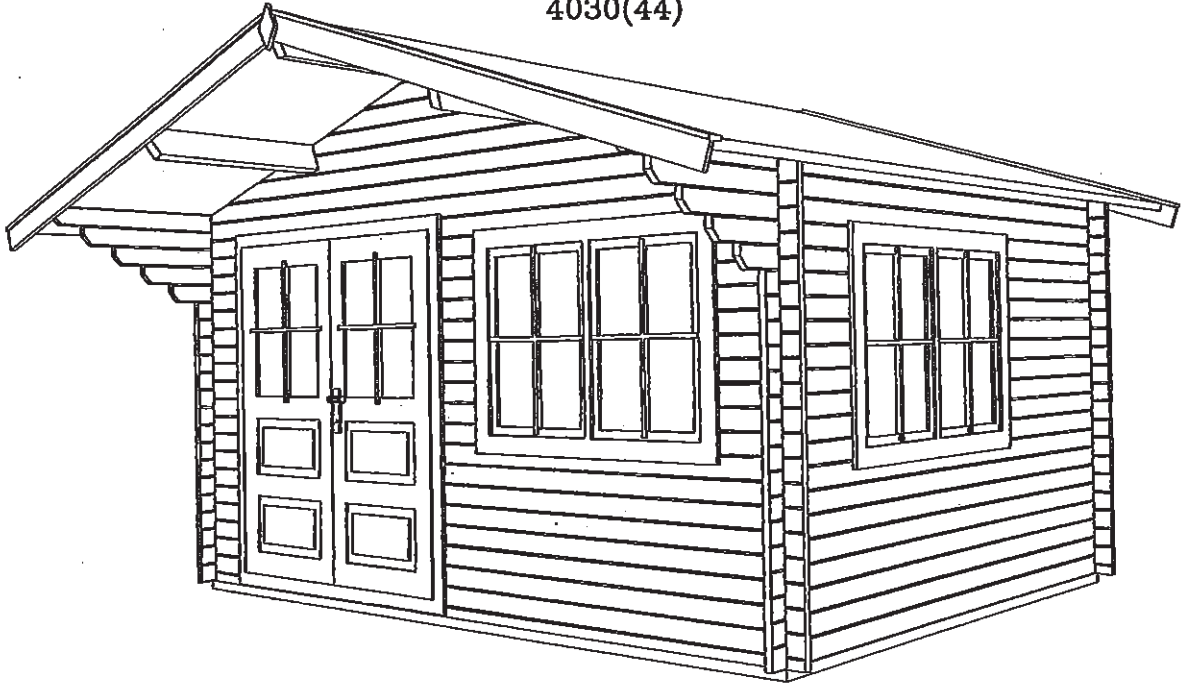


4030(35)



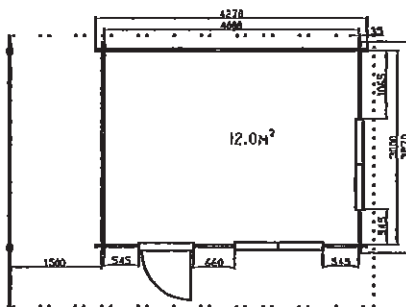
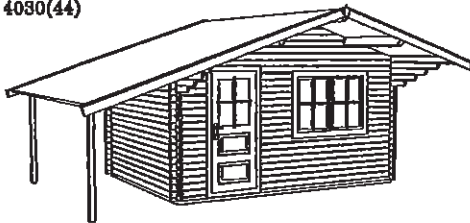
4×4m /軒の出2m /ベランダ1.8m 4.5×4m /軒の出2.2m /ベランダ2m 4×3m /軒の出2m /ベランダ1.8m

4030(35)
4030(44)



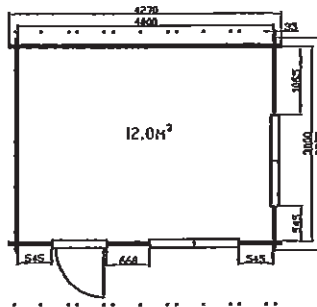
4×3m (35mm、44mm)
軒の出1m (1.5m)
ダブルドア
ダブル窓 (内開き) 2
床板22mm / 屋根板19mm
棟木・母屋140×60mm
土台100×40mm、50×40mm
壁の厚み2.1m
屋根最高高さ2.77m

4030(35)
4030(44)



4×3m / 軒の出1.5m / 対1.5×4.77m
壁の高さ2.1m
屋根最高高さ2.77m

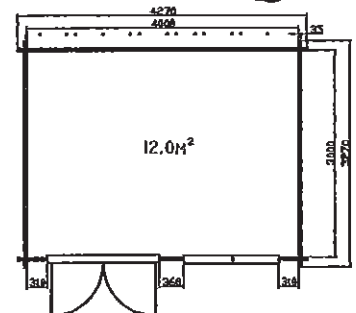
4030(35)
4030(44)



4×3m
軒の出1mまたは1.5m
壁の高さ2.1m
屋根最高高さ2.77m

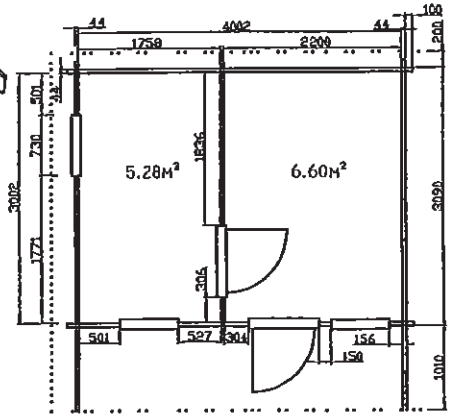
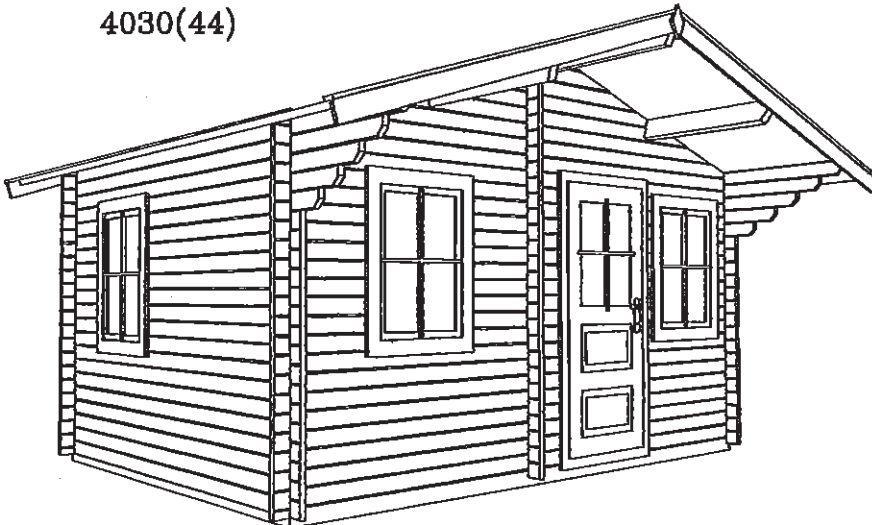
4030(35)
4030(44)

4030(35)
4030(44)



4×3m
屋根1mまたは1.5m / ダブルドア
壁高さ2.1m/屋根最高高さ2.77m

4030(44)

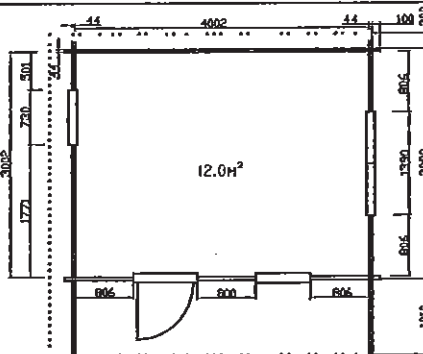
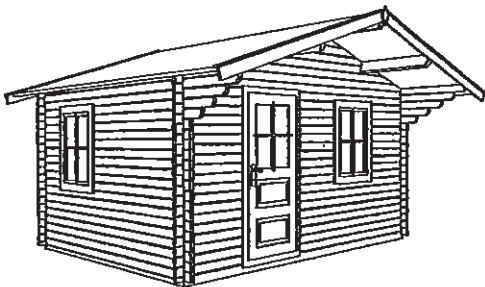


4×3 (44mm) /二重屋根

軒の出1m

外部ドアガラス付き1 /内部ドアガラス付き1 /窓(内開き)

4030(44)



4×3m /軒の出1m
二重屋根

壁の高さ2.13m
屋根最高高さ2.78m

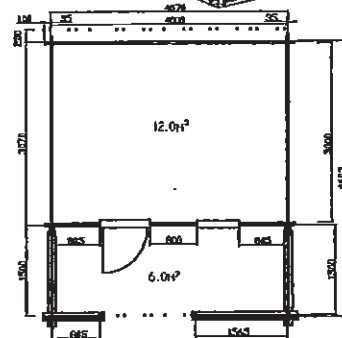
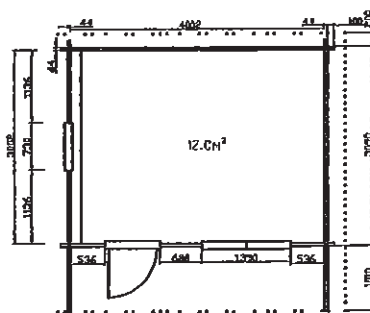
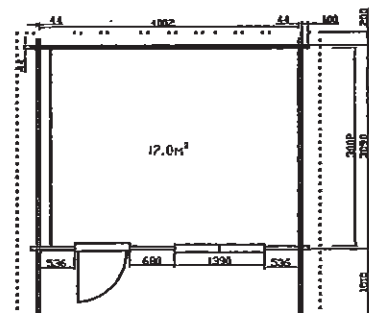
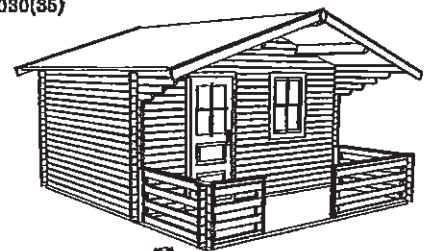
4030(44)



4030(44)



4030(35)

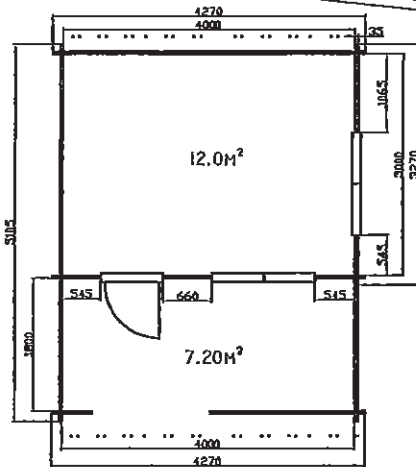
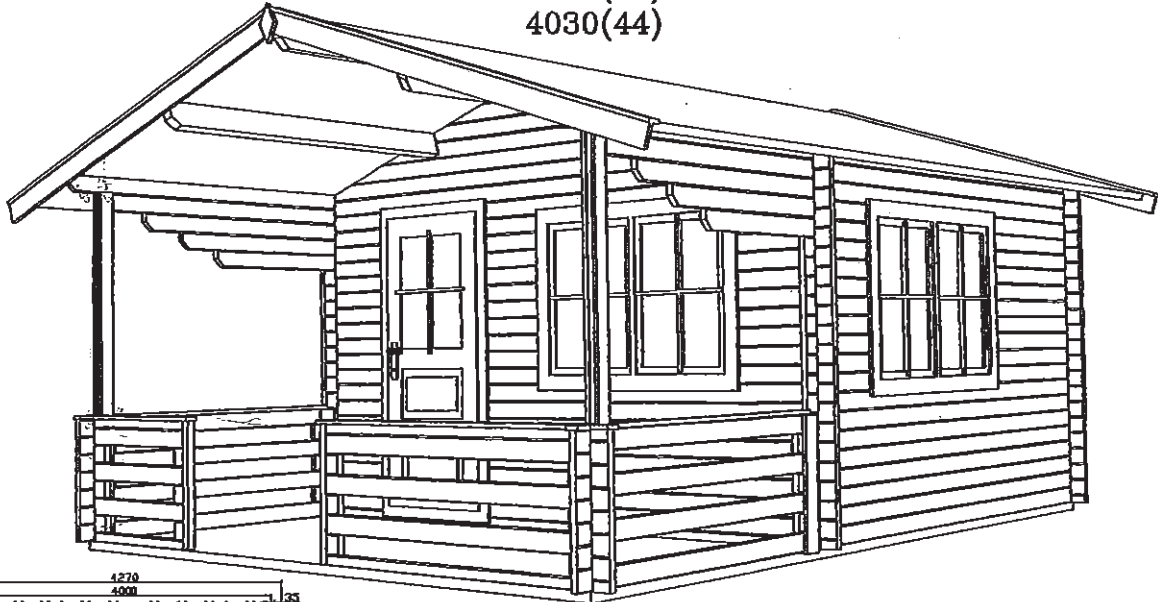


4×3m
軒の出1m /二重屋根
壁の高さ2.13m
屋根最高高さ2.78m

4×3m
軒の出1m /二重屋根
壁の高さ2.13m
屋根最高高さ2.78m

4×3m /軒の出1.5m
ベランダ1.5m /シングル屋根
壁の高さ2.1m
屋根最高高さ2.77m

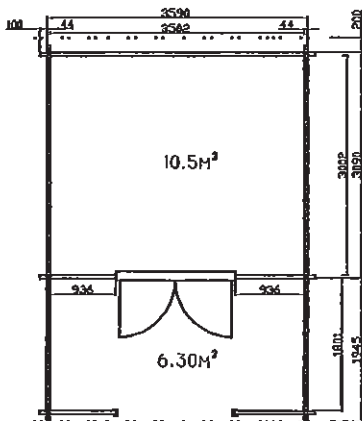
4030(35)
4030(44)



4×3m (35mm、44mm)
軒の出2.1m /パランダ1.8m
外部ドアガラス付き1
ダブル窓ガラス付き2 (内開き)

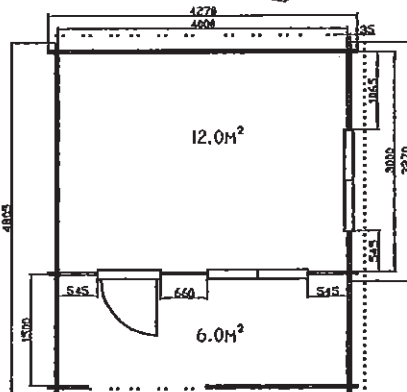
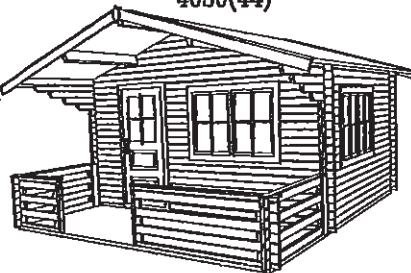
床板22mm /屋根板19mm
棟木・母屋140×60mm
土台100×40mm・50×40mm
壁の高さ2.1m /屋根最高高さ2.77m

3530(44)



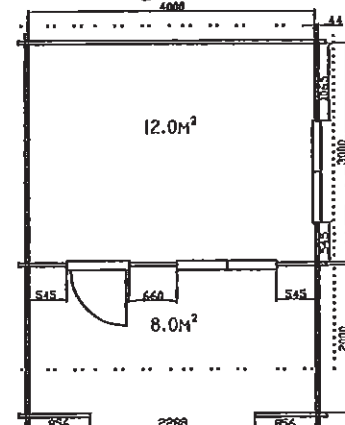
3.5×3m /軒の出1.95m /パランダ1.8m
高さ2.7m

4030(35)
4030(44)



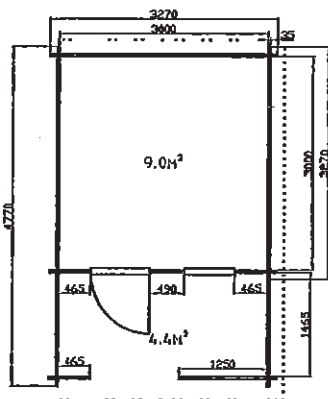
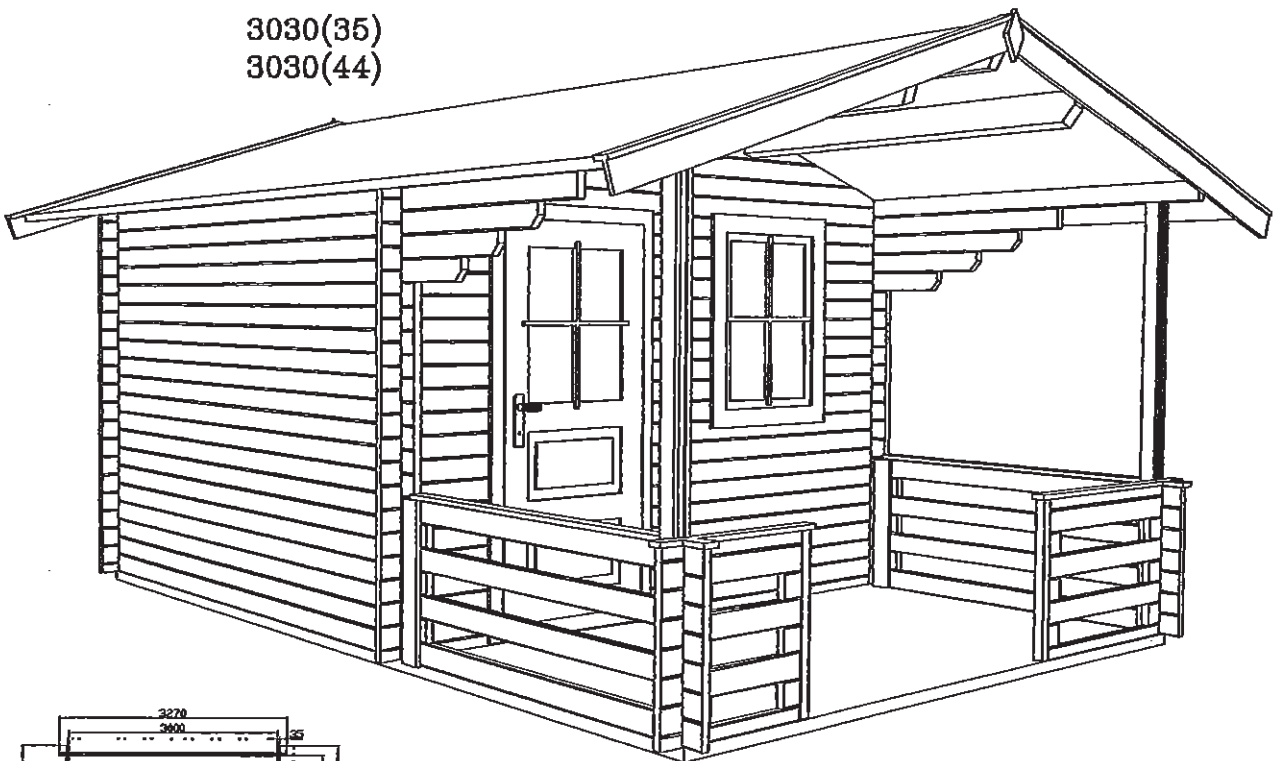
4×3m /軒の出1.5m /パランダ1.5m

4030(35)
4030(44)



4×3m /軒の出1.4m /パランダ2m

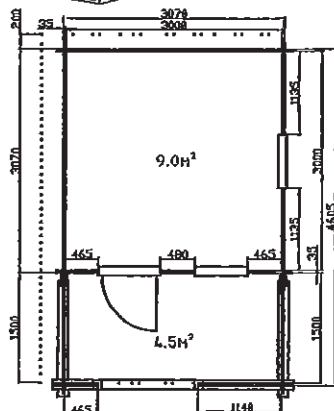
3030(35)
3030(44)



3×3m (35mm、44mm)
軒の出1.8m /ベランダ1.47m

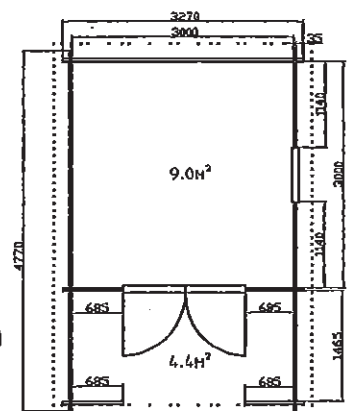
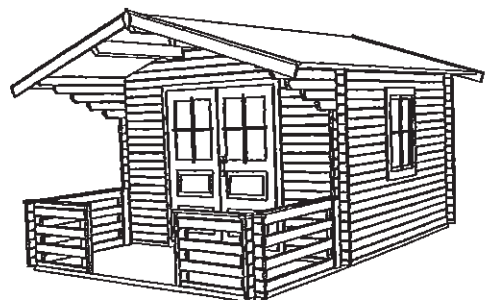
外部ドアガラス付き1 /窓1 (内開き)
床板22mm /屋根板19mm /棟木母屋140×60mm
土台100×40mm、50×40mm
壁の高さ2.1m
屋根最高高さ2.61m

3030(35)
3030(44)



3×3m
軒の出1.47m
ベランダ1.47m
壁の高さ2.1m
屋根の高さ2.61m

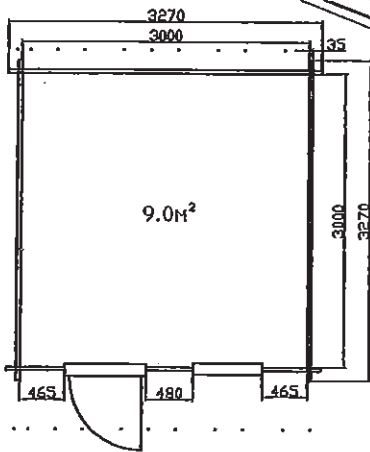
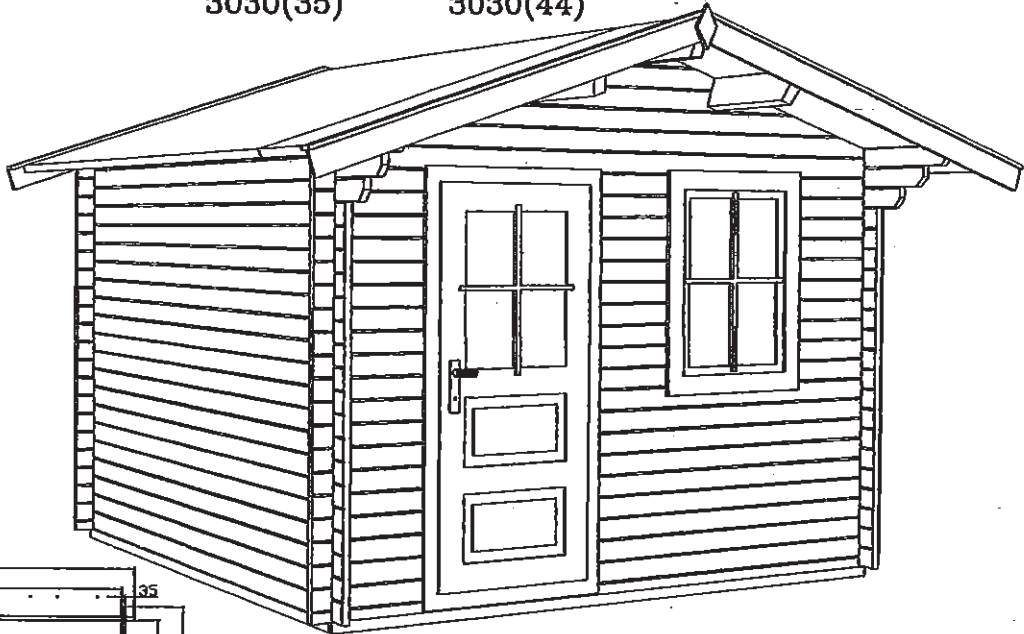
3030(35)
3030(44)



3×3m
軒の出1.47m
ベランダ1.47m
ダブルドア
壁の高さ2.1m
屋根最高高さ2.61m

3030(35)

3030(44)

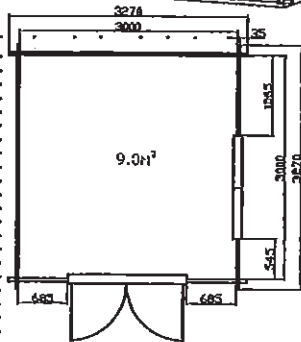


3×3m (35mm、44mm)
 軒の出0.6m
 外部ドアガラス付き1 / 窓1 (内開き)
 床板22mm / 屋根板19mm
 棟木・母屋140×44mm
 土台100×40mm・50×40mm

壁の高さ2.1m
 屋根最高高さ2.61m

3030(35)
3030(44)

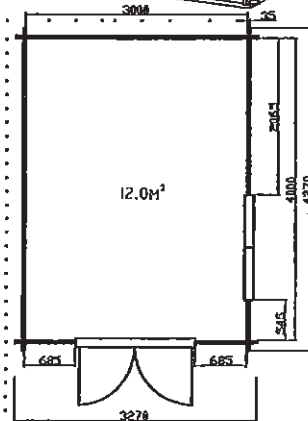
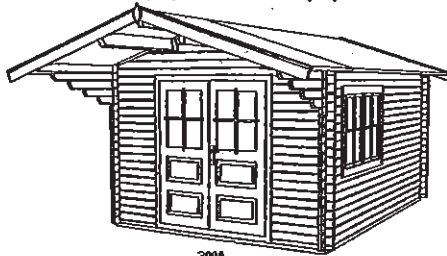
3030(35)
3030(44)



3×3m / 軒の出1m (1.5m)
 ダブルドア
 壁の高さ2.1m / 屋根最高高さ2.61m

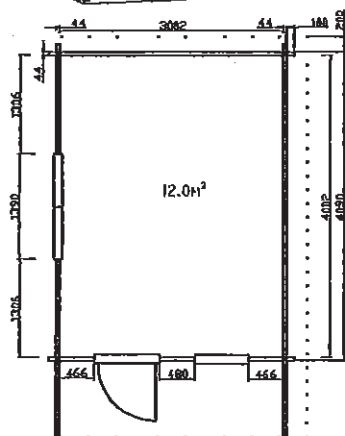
3040(35)
3040(44)

3040(35)
3040(44)



3×4m / 軒の出1m (1.5m)
 ダブルドア

3040(44)

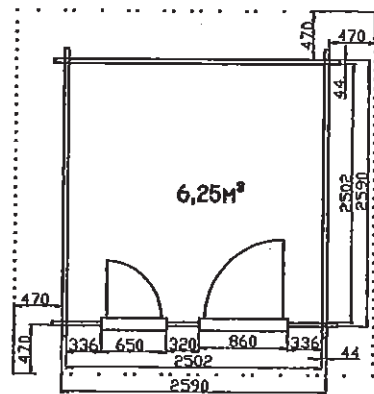
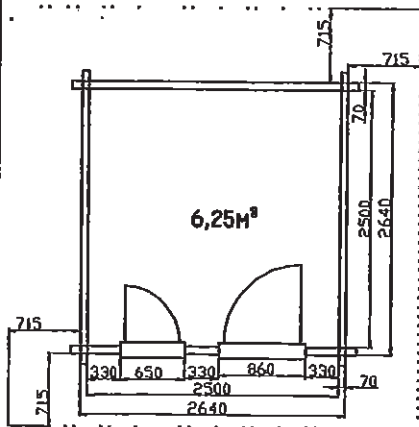
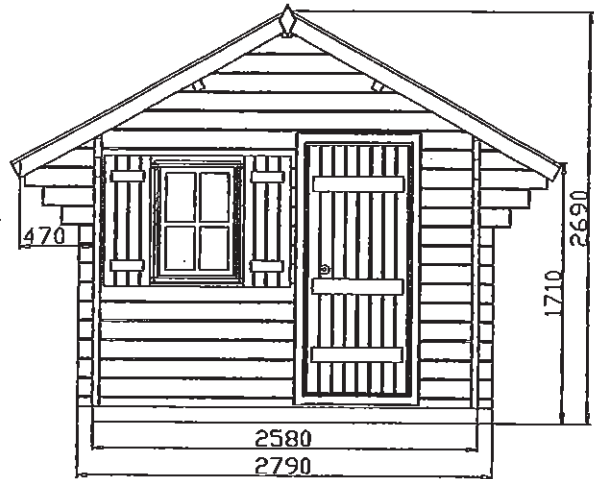
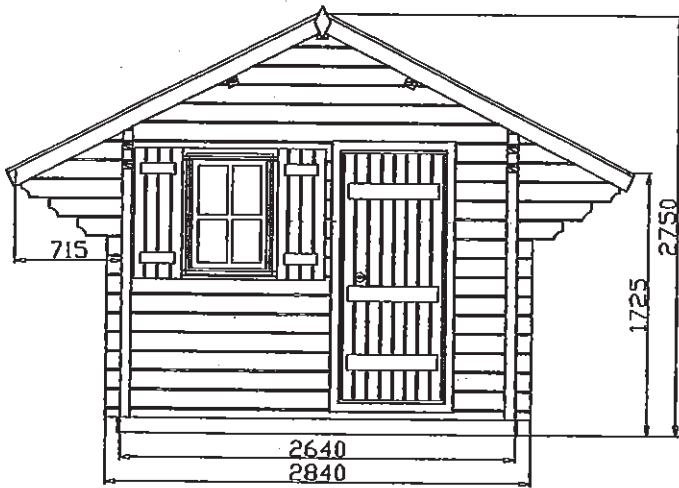


3×4m / 軒の出1m
 シングルドア

物置

2525(70)

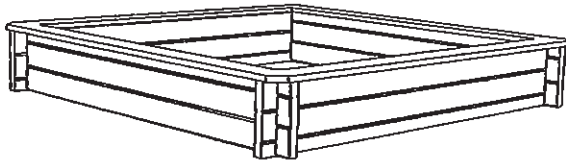
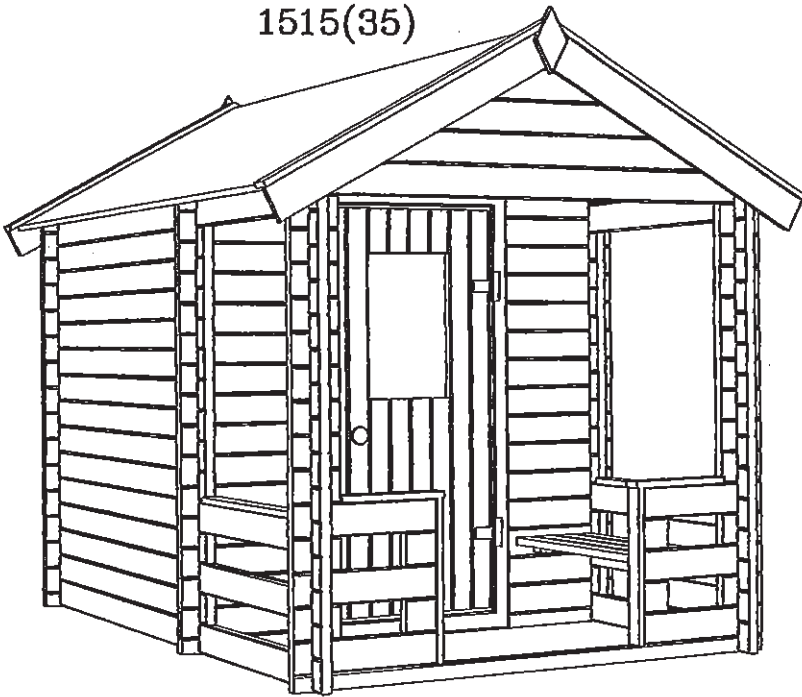
2525(44)



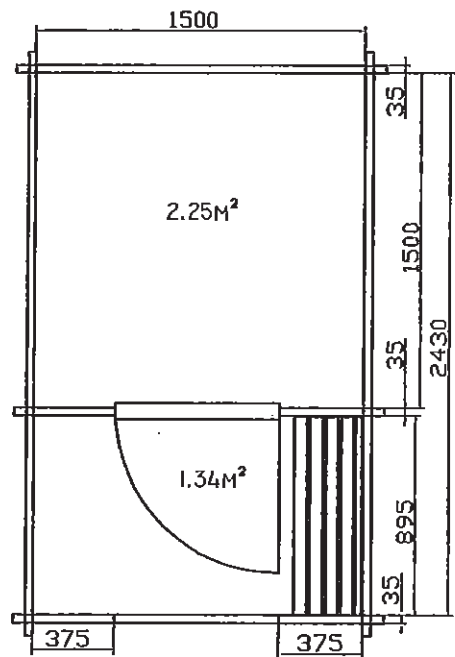
2.5×2.5m (44mm、70mm)
 軒の出0.7mまたは0.5m
 外部ドア1 (内開き)
 窓シャッター付き1 (内開き)

床板22mm / 屋根板19mm
 棟木・母屋140×60mm
 140×70mm
 土台100×35mm

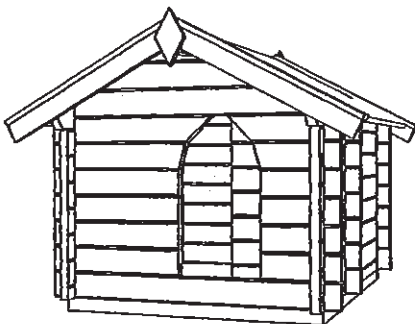
1515(35)



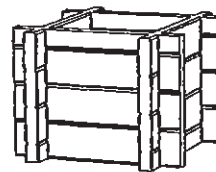
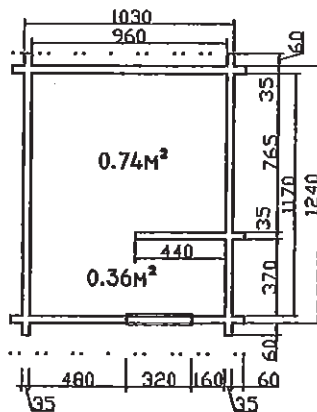
砂場1.5×1.5m 8 35mm)



犬小屋9676 (35mm)

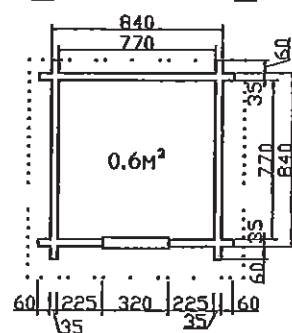
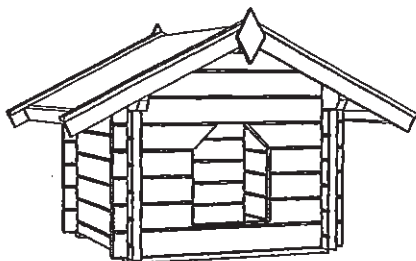


犬小屋7777 (35mm)
犬小屋4141 (35mm)

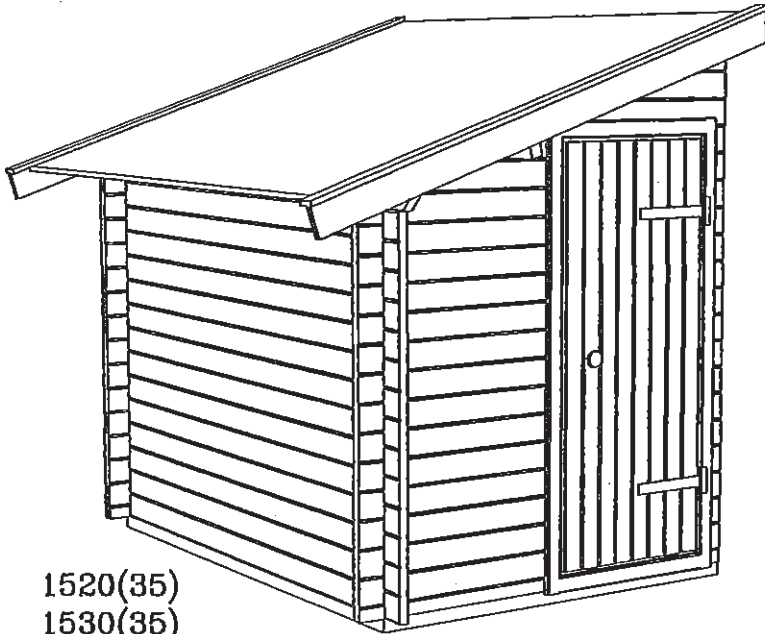


フラワーボックス (35m)

- 1×0.3×0.35m
- 0.8×0.3×0.35m
- 0.43×0.43×0.3m
- 0.33×0.33×0.3m

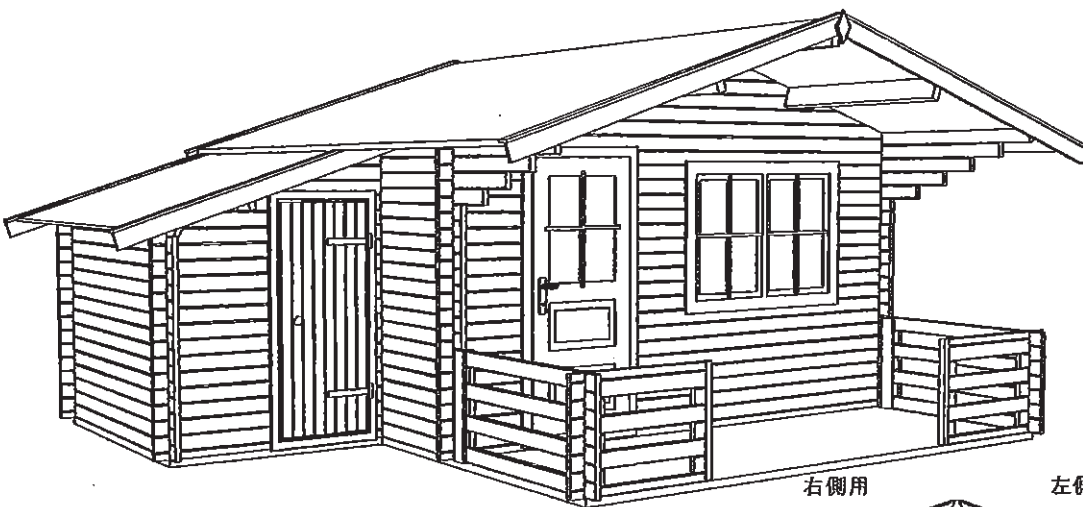
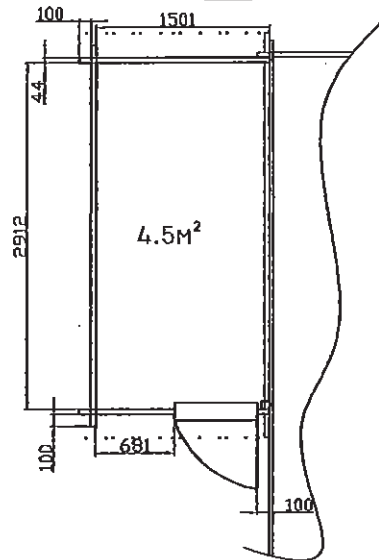
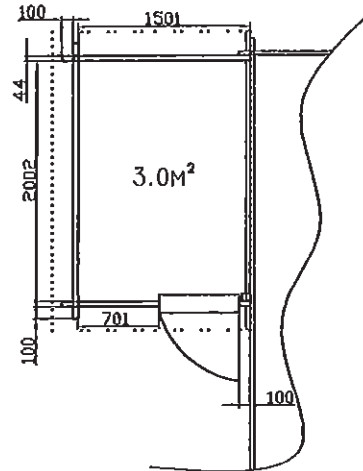


物置き



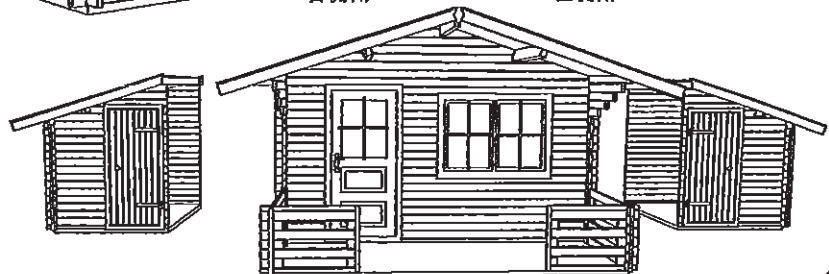
- 1520(35)
- 1530(35)
- 1520(44)
- 1530(44)

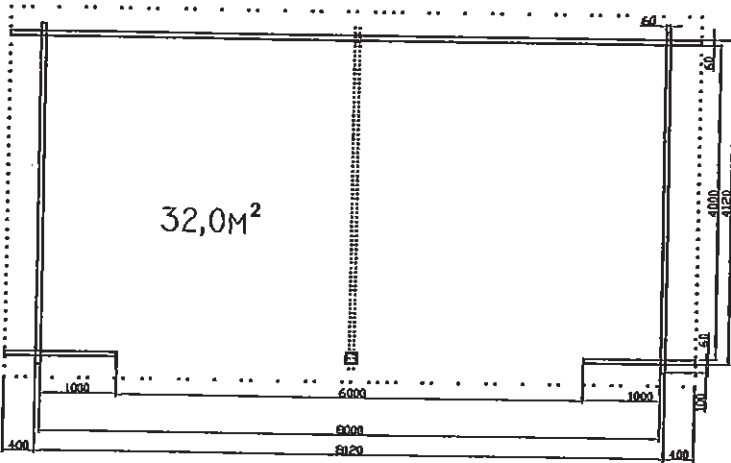
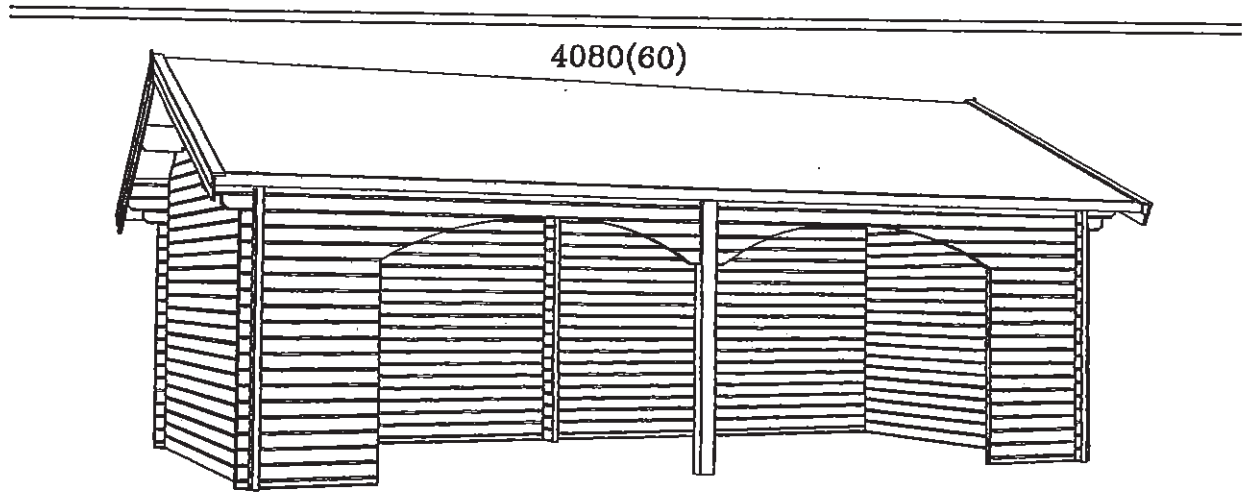
1.5×2m (35mm・44mm) /屋根勾配18°
床板22mm /屋根板19mm
棟木・母屋140×44mm
土台100×35mm・50×35mm
壁高さ1.55mm /屋根最高高さ2m



右側用

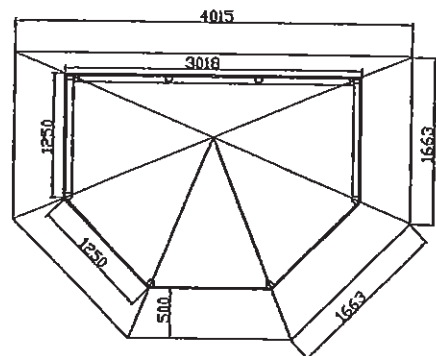
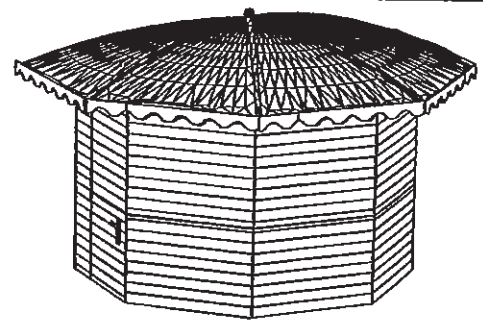
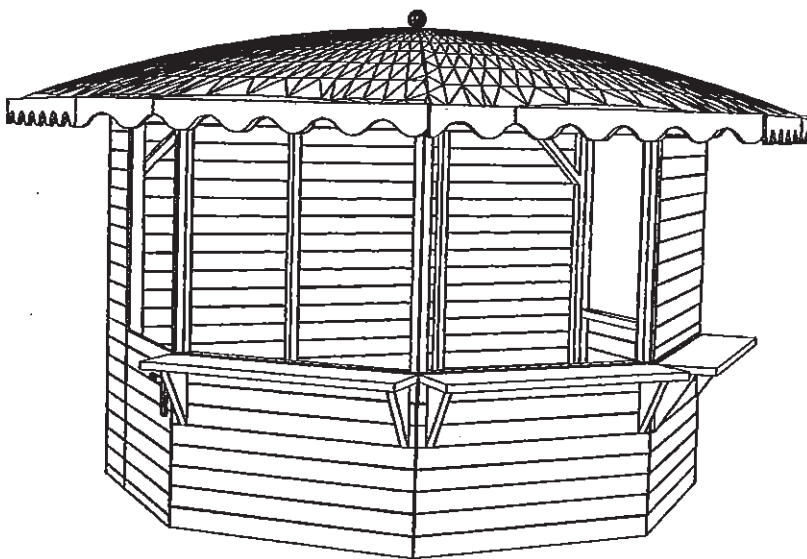
左側用





4×8m (44mm、60mm)
 軒の出0.4m
 屋根板19mm
 棟木・母屋240×60mm
 土台70×44mm
 壁の高さ2.56m
 屋根の高さ3.56m

トレードハウス

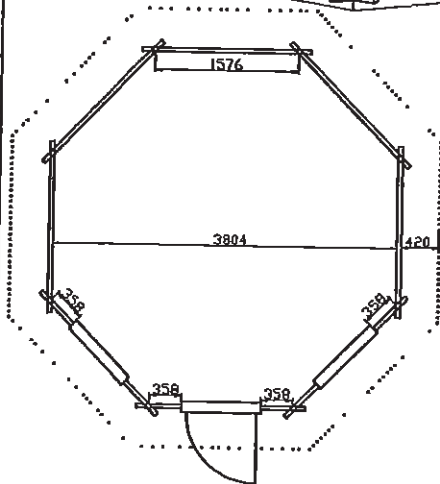
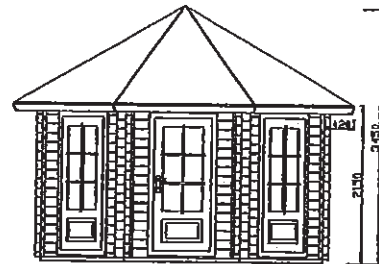
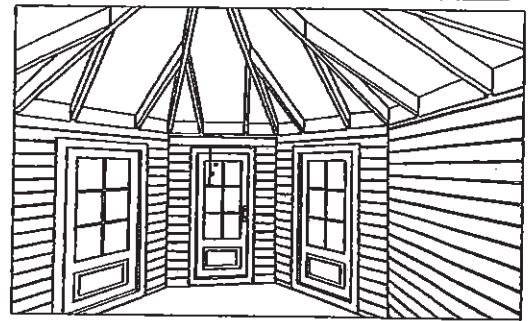
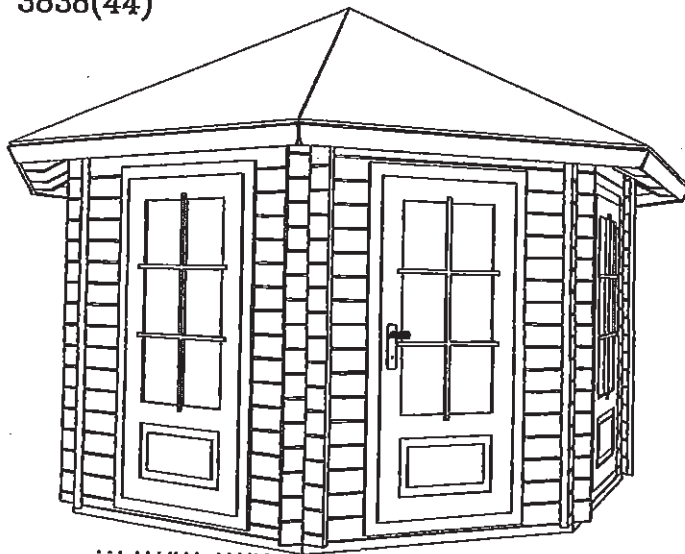


外部3.02×2.15m (16mm)
 床板22mm
 屋根-白メタル

壁の高さ2.15m
 屋根の高さ2.5m

パビリオン

3838(44)

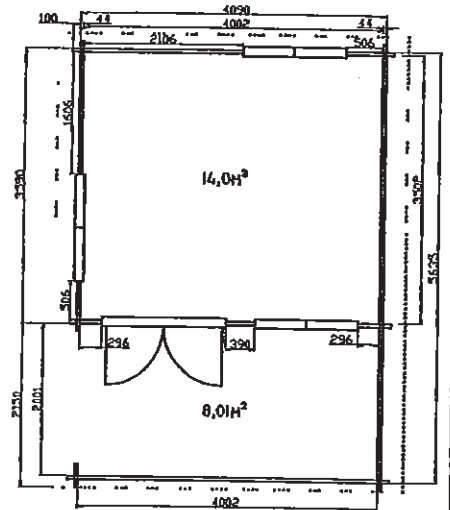
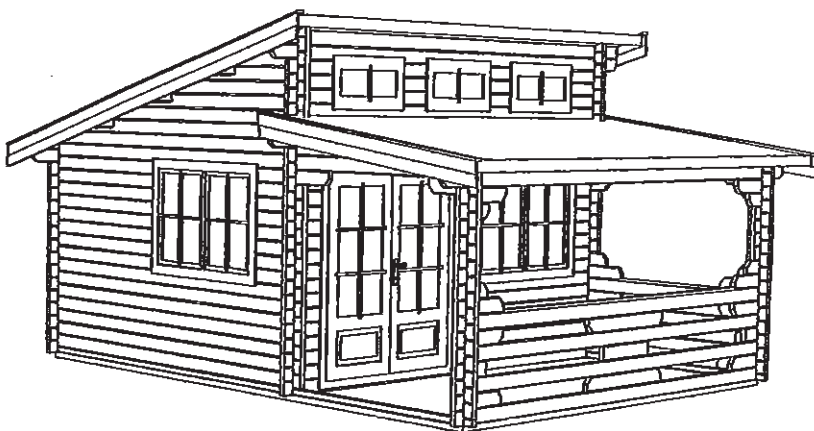


直径3.8m (～12㎡) (44mm) /軒の出0.42m
 ドア1 ドア FIX/2

床板22mm
 屋根板19mm
 棟木・母屋140×44mm
 土台100×40mm・50×40mm

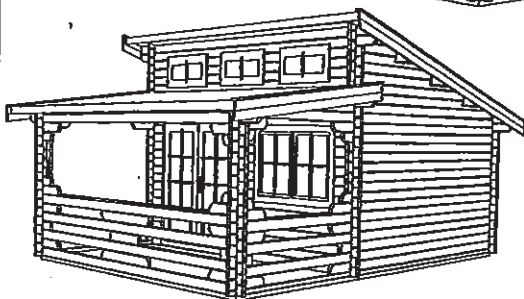
壁の高さ2.15m
 屋根最高高さ3.45m

4035(44)

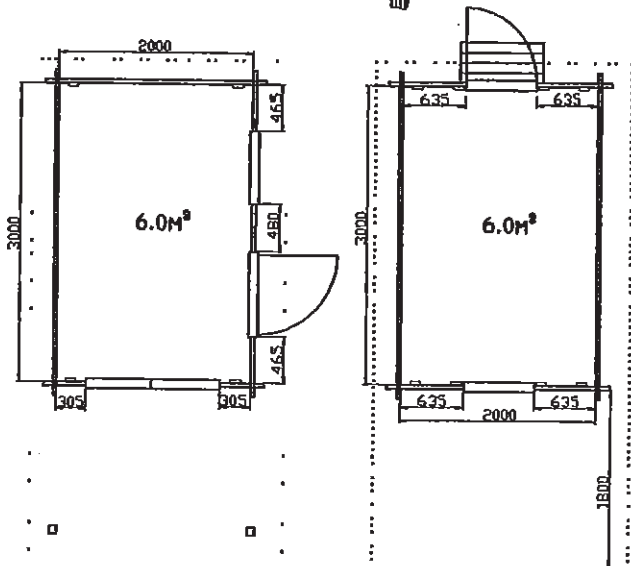
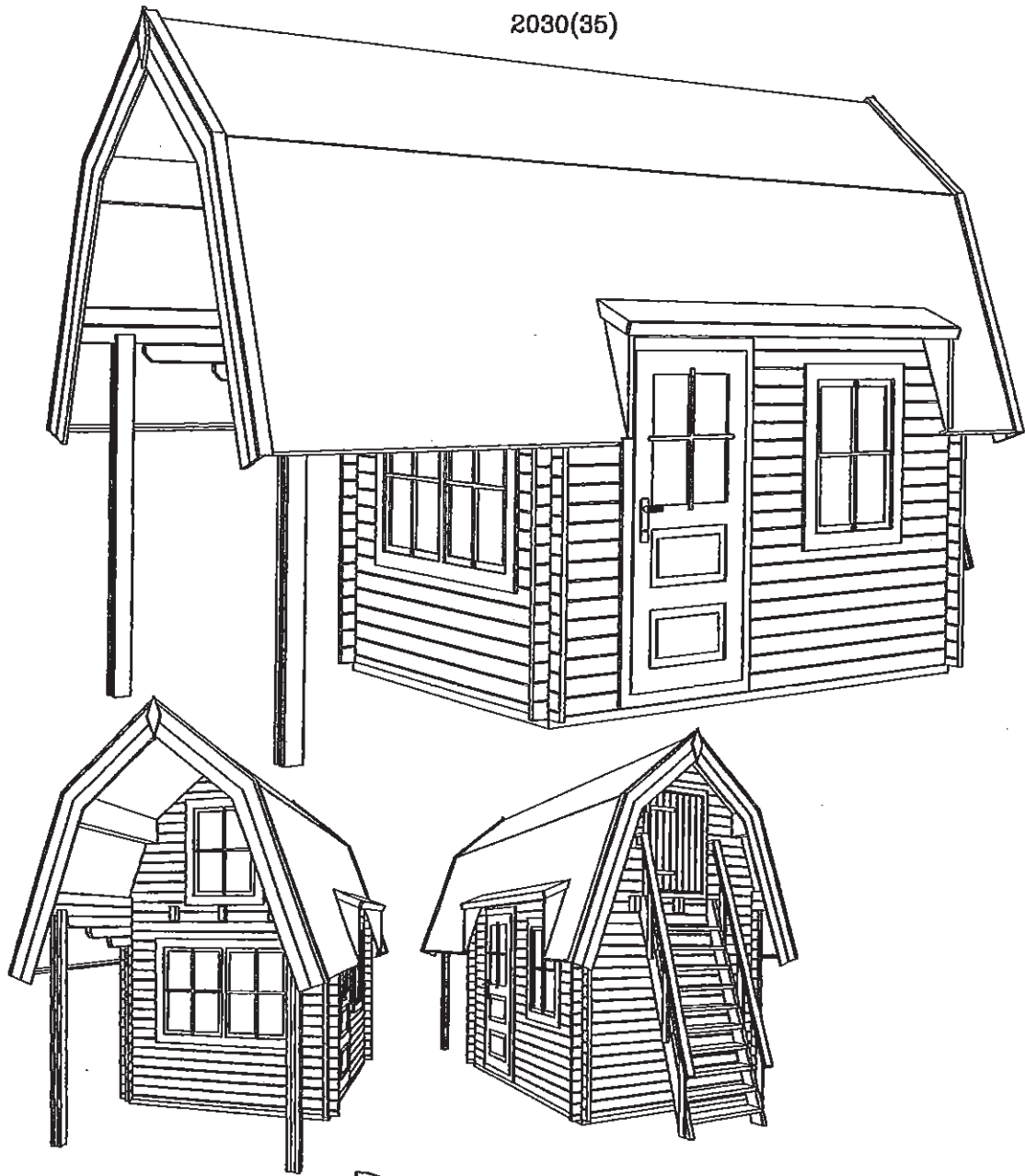


4×3.5m (44mm、60mm) /ペランダ2m
 ダブルドア1 /ダブル窓3(内開き) /小窓3

壁の高さ2.13m
 屋根の高さ3.32m



2030(35)



2×3m (35mm)

1階6㎡

2階6㎡

ドアガラス付き1 /小ドア1

ダブル窓1 /窓1 (内開き)

床板22mm

屋根板19mm

棟木・母屋240×60・140×60

2階天井高さ1.5m /屋根最高高さ3.5m